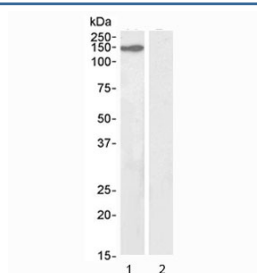


## KIF4A Antibody (R35894)

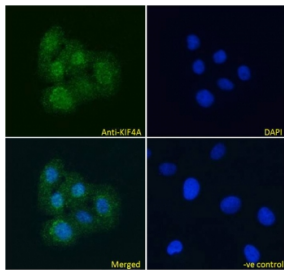
Catalog No.	Formulation	Size
R35894-100UG	0.5 mg/ml in 1X TBS, pH7.3, with 0.5% BSA (US sourced) and 0.02% sodium azide	100 ug

[Bulk quote request](#)

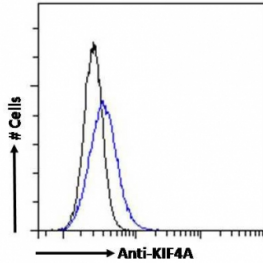
<b>Availability</b>	1-3 business days
<b>Species Reactivity</b>	Human
<b>Predicted Reactivity</b>	Mouse, Rat, Pig, Cow
<b>Format</b>	Antigen affinity purified
<b>Clonality</b>	Polyclonal (goat origin)
<b>Isotype</b>	Goat Ig
<b>Purity</b>	Antigen affinity
<b>Gene ID</b>	24137
<b>Localization</b>	Cytoplasmic, nuclear
<b>Applications</b>	Western Blot : 1-3ug/ml Immunofluorescence : 10ug/ml Flow Cytometry : 10ug/10 <sup>6</sup> cells ELISA (peptide) LOD : 1:64000
<b>Limitations</b>	This KIF4A antibody is available for research use only.



Western blot testing of 1) mouse NIH3T3 lysate (nuclear fraction) and 2) human ovary lysate (negative control) with KIF4A antibody at 2ug/ml. Predicted molecular weigh ~140 kDa.



ICC/IF testing of fixed and permeabilized human U-2 OS cells with KIF4A antibody (green) at 10ug/ml and DAPI nuclear stain (blue).



FACS testing of fixed and permeabilized human HEK293 cells with KIF4A antibody (blue) at 10ug/10<sup>6</sup> cells and naive goat Ig (black).

## Description

Additional name(s) for this target protein: Kinesin family member 4A

## Application Notes

Optimal dilution of the KIF4A antibody should be determined by the researcher.

## Immunogen

Amino acids SFFSGCSPIEEEAH were used as the immunogen for this KIF4A antibody.

## Storage

Aliquot and store the KIF4A antibody at -20oC.