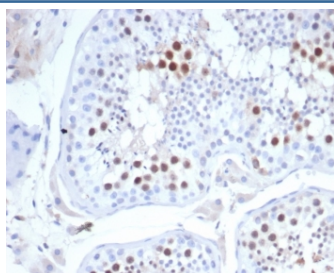


## KIF2C Antibody / Kinesin Family Member 2C / MCAK [clone KIF2C/4702] (V4657)

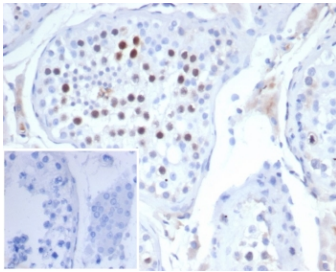
| Catalog No.    | Formulation   | Size   |
|----------------|---|--------|
| V4657-100UG    | 0.2 mg/ml in 1X PBS with 0.1 mg/ml BSA (US sourced), 0.05% sodium azide | 100 ug |
| V4657-20UG     | 0.2 mg/ml in 1X PBS with 0.1 mg/ml BSA (US sourced), 0.05% sodium azide | 20 ug  |
| V4657SAF-100UG | 1 mg/ml in 1X PBS; BSA free, sodium azide free                          | 100 ug |

### Bulk quote request

|                    |   |
|--------------------|---|
| Availability       | 1-3 business days                                       |
| Species Reactivity | Human   |
| Format             | Purified  |
| Host               | Mouse   |
| Clonality          | Monoclonal (mouse origin)                               |
| Isotype            | Mouse IgG1, kappa                                       |
| Clone Name         | KIF2C/4702  |
| Purity             | Protein A/G affinity                                    |
| UniProt            | Q99661  |
| Localization       | Cytoplasm, Nucleus                                      |
| Applications       | Immunohistochemistry (FFPE) : 1-2ug/ml for 30 min at RT |
| Limitations        | This KIF2C antibody is available for research use only. |



IHC staining of FFPE human testis tissue with KIF2C antibody (clone KIF2C/4702) at 2ug/ml. HIER: boil tissue sections in pH 9 10mM Tris with 1mM EDTA for 20 min and allow to cool before testing.



IHC staining of FFPE human testis tissue with KIF2C antibody (clone KIF2C/4702) at 2ug/ml. Inset: PBS used in place of primary Ab (secondary Ab negative control). HIER: boil tissue sections in pH 9 10mM Tris with 1mM EDTA for 20 min and allow to cool before testing.



Analysis of a HuProt(TM) microarray containing more than 19,000 full-length human proteins using KIF2C / MCAK antibody (clone KIF2C/4702). Z- and S- Score: The Z-score represents the strength of a signal that a monoclonal antibody (in combination with a fluorescently-tagged anti-IgG secondary antibody) produces when binding to a particular protein on the HuProt(TM) array. Z-scores are described in units of standard deviations (SD's) above the mean value of all signals generated on that array. If targets on HuProt(TM) are arranged in descending order of the Z-score, the S-score is the difference (also in units of SD's) between the Z-score. S-score therefore represents the relative target specificity of a mAb to its intended target. A mAb is considered to specific to its intended target, if the mAb has an S-score of at least 2.5. For example, if a mAb binds to protein X with a Z-score of 43 and to protein Y with a Z-score of 14, then the S-score for the binding of that mAb to protein X is equal to 29.

## Description

Kinesin family member 2c (KIF2C), alternately known as mitotic centromere associated kinesin (MCAK), is a member of the kinesin-like family of proteins. KIF2C is a cytoplasmic and nuclear protein, present throughout the cell cycle. KIF2C associates with the centromere early in prophase, and disassociates after telophase. KIF2C is abundant in thymus and testis, and present at lower levels in small intestine, the mucosal lining of the colon, and placenta. Human KIF2C maps to chromosome 1p34.1.

## Application Notes

Optimal dilution of the KIF2C antibody should be determined by the researcher.

## Immunogen

A recombinant partial protein sequence (within amino acids 500-700) from the human protein was used as the immunogen for the KIF2C antibody.

## Storage

Aliquot the KIF2C antibody and store frozen at -20oC or colder. Avoid repeated freeze-thaw cycles.