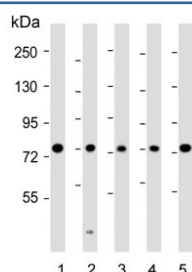


KIF22 Antibody / Kinesin-like protein KIF22 (F54399)

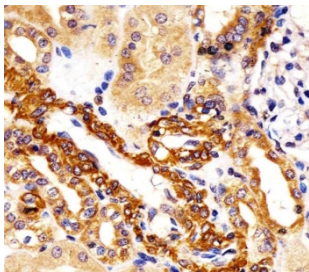
Catalog No.	Formulation	Size
F54399-0.4ML	In 1X PBS, pH 7.4, with 0.09% sodium azide	0.4 ml
F54399-0.08ML	In 1X PBS, pH 7.4, with 0.09% sodium azide	0.08 ml

[Bulk quote request](#)

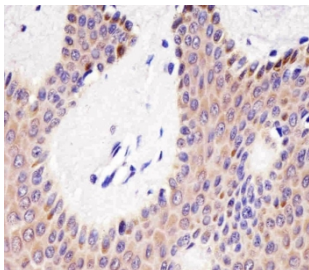
Availability	1-3 business days
Species Reactivity	Human
Format	Purified
Host	Rabbit
Clonality	Polyclonal (rabbit origin)
Isotype	Rabbit Ig
Purity	Antigen affinity purified
UniProt	Q14807
Localization	Nuclear, cytoplasmic
Applications	Western Blot : 1:500-1:2000 Immunohistochemistry (FFPE) : 1:25 Immunofluorescence : 1:25
Limitations	This KIF22 antibody is available for research use only.



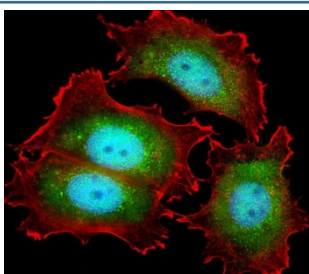
Western blot testing of human 1) MCF7, 2) HeLa, 3) SH-SY5Y, 4) Jurkat and 5) HL60 cell lysate with KIF22 antibody. Predicted molecular weight ~73 kDa.



IHC testing of FFPE human kidney tissue with KIF22 antibody. HIER: steam section in pH6 citrate buffer for 20 min and allow to cool prior to staining.



IHC testing of FFPE human skin tissue with KIF22 antibody. HIER: steam section in pH6 citrate buffer for 20 min and allow to cool prior to staining.



Immunofluorescent staining of fixed and permeabilized human MCF7 cells with KIF22 antibody (green), DAPI nuclear stain (blue) and anti-Actin (red).

Description

Kinesin family that is involved in spindle formation and the movements of chromosomes during mitosis and meiosis. Binds to microtubules and to DNA.

Application Notes

The stated application concentrations are suggested starting points. Titration of the KIF22 antibody may be required due to differences in protocols and secondary/substrate sensitivity.

Immunogen

A portion of amino acids 423-456 from the human protein was used as the immunogen for the KIF22 antibody.

Storage

Aliquot the KIF22 antibody and store frozen at -20oC or colder. Avoid repeated freeze-thaw cycles.