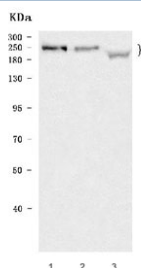


KIF1B Antibody (RQ7327)

Catalog No.	Formulation	Size
RQ7327	0.5mg/ml if reconstituted with 0.2ml sterile DI water	100 ug

Bulk quote request

Availability	1-3 business days
Species Reactivity	Human, Mouse, Rat
Format	Antigen affinity purified
Clonality	Polyclonal (rabbit origin)
Isotype	Rabbit IgG
Purity	Antigen affinity purified
Buffer	Lyophilized from 1X PBS with 2% Trehalose
UniProt	O60333
Applications	Western Blot : 0.5-1ug/ml Direct ELISA : 0.1-0.5ug/ml
Limitations	This KIF1B antibody is available for research use only.



Western blot testing of 1) human HeLa, 2) rat brain and 3) mouse skeletal muscle tissue lysate with KIF1B antibody. Predicted molecular weight: 199-205 kDa (multiple isoforms).

Description

Kinesin-like protein KIF1B is a protein that in humans is encoded by the KIF1B gene. This gene encodes a motor protein that transports mitochondria and synaptic vesicle precursors. Mutations in this gene cause Charcot-Marie-Tooth disease, type 2A1.

Application Notes

Optimal dilution of the KIF1B antibody should be determined by the researcher.

Immunogen

Recombinant human protein (amino acids D390-L1314) was used as the immunogen for the KIF1B antibody.

Storage

After reconstitution, the KIF1B antibody can be stored for up to one month at 4oC. For long-term, aliquot and store at -20oC. Avoid repeated freezing and thawing.