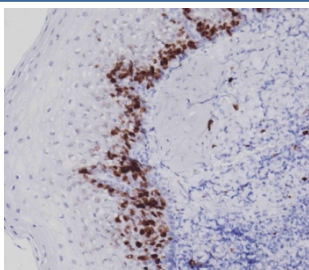


## Ki67 antibody [clone 2179CT8.1.2.1] (F54499)

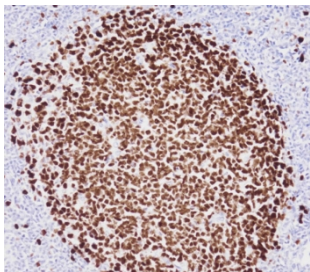
| Catalog No.   | Formulation                                | Size    |
|---------------|--|---------|
| F54499-0.2ML  | In 1X PBS, pH 7.4, with 0.09% sodium azide | 0.2 ml  |
| F54499-0.05ML | In 1X PBS, pH 7.4, with 0.09% sodium azide | 0.05 ml |

[Bulk quote request](#)

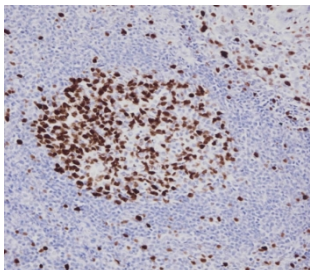
|                           |  |
|---------------------------|--|
| <b>Availability</b>       | 1-3 business days                                      |
| <b>Species Reactivity</b> | Human  |
| <b>Format</b>             | Purified   |
| <b>Host</b>               | Mouse  |
| <b>Clonality</b>          | Monoclonal (mouse origin)                              |
| <b>Isotype</b>            | IgG1   |
| <b>Clone Name</b>         | 2179CT8.1.2.1  |
| <b>Purity</b>             | Protein G affinity                                     |
| <b>UniProt</b>            | P46013   |
| <b>Localization</b>       | Nuclear  |
| <b>Applications</b>       | Immunohistochemistry (FFPE) : 1:25                     |
| <b>Limitations</b>        | This Ki67 antibody is available for research use only. |



IHC testing of FFPE human tonsil tissue with Ki67 antibody. HIER: steam section in pH9 EDTA for 20 min and allow to cool prior to staining.



IHC testing of FFPE human tonsil tissue with Ki67 antibody. HIER: steam section in pH9 EDTA for 20 min and allow to cool prior to staining.



IHC testing of FFPE human tonsil tissue with Ki67 antibody. HIER: steam section in pH9 EDTA for 20 min and allow to cool prior to staining.

## Description

Required to maintain individual mitotic chromosomes dispersed in the cytoplasm following nuclear envelope disassembly. Associates with the surface of the mitotic chromosome, the perichromosomal layer, and covers a substantial fraction of the chromosome surface. Prevents chromosomes from collapsing into a single chromatin mass by forming a steric and electrostatic charge barrier: the protein has a high net electrical charge and acts as a surfactant, dispersing chromosomes and enabling independent chromosome motility.

## Application Notes

The stated application concentrations are suggested starting points. Titration of the Ki67 antibody may be required due to differences in protocols and secondary/substrate sensitivity.

## Immunogen

Recombinant human protein was used as the immunogen for the Ki67 antibody.

## Storage

Aliquot the Ki67 antibody and store frozen at -20oC or colder. Avoid repeated freeze-thaw cycles.