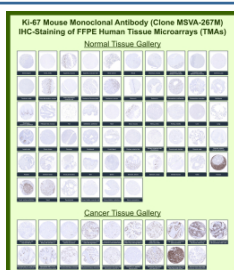


## Ki-67 Antibody for IHC / Ki67 Immunohistochemistry Antibody [clone MSVA-267M] (V6097)

Catalog No.	Formulation	Size
V6097-100UG	Antibody in 1X PBS with 0.05% BSA, 0.05% sodium azide	100 ug
V6097-20UG	Antibody in 1X PBS with 0.05% BSA, 0.05% sodium azide	20 ug

[Bulk quote request](#)

<b>Species Reactivity</b>	Human
<b>Format</b>	Purified
<b>Host</b>	Mouse
<b>Clonality</b>	Monoclonal (mouse origin)
<b>Isotype</b>	Mouse IgG2b, kappa
<b>Clone Name</b>	MSVA-267M
<b>UniProt</b>	P46013
<b>Localization</b>	Chromosome, Nucleolus, Nucleus
<b>Applications</b>	Immunohistochemistry (FFPE) : 1:100-1:200
<b>Limitations</b>	This Ki-67 Antibody for IHC is available for research use only.



Ki-67 Antibody for IHC Tissue Microarray (TMA). Immunohistochemistry analysis of Ki-67 / MKI67 in formalin-fixed paraffin-embedded human normal and cancer tissue microarrays using mouse monoclonal antibody clone MSVA-267M. Tissue microarray (TMA) staining with HRP-DAB brown chromogen demonstrates nuclear localization in proliferating cell populations, consistent with the role of Ki-67 as a proliferation marker. In normal tissue microarrays, staining is largely restricted to physiologic proliferative compartments, including germinal centers in lymphoid tissues, basal epithelial layers, and intestinal crypt cells, while most differentiated tissues show minimal to absent signal. Within tumor tissue microarrays, many carcinomas and other malignancies display elevated fractions of Ki-67-positive nuclei, reflecting increased cellular proliferation. Evaluation across large TMA panels enables direct comparison of MKI67 expression across diverse tissue types under standardized conditions. The observed staining patterns align with reported Ki-67 expression profiles in the Human Protein Atlas and support its use as a marker of cell proliferation and tumor growth fraction.

### Description

Ki-67 antigen (MKI67) is a nuclear proliferation-associated protein encoded by the MKI67 gene and is widely used as a marker of actively cycling cells in normal and neoplastic tissues. Ki-67 Antibody for IHC / Ki-67 IHC Antibody is developed for immunohistochemistry detection of this well-established proliferation marker in formalin-fixed, paraffin-embedded tissue sections. Because Ki-67 expression is closely linked to cell cycle activity and is largely absent in quiescent cells, immunohistochemistry staining provides a practical way to visualize proliferative compartments directly within preserved tissue architecture.

Ki-67 antibody, also referred to as Ki67 antibody, MKI67 antibody, or Antigen Ki-67 antibody in the literature, detects a protein that localizes predominantly to the nucleus during active phases of the cell cycle. In immunohistochemistry studies, Ki-67 staining typically appears as brown nuclear chromogenic signal in proliferating cells, allowing clear distinction between cycling and non-cycling populations. This makes Ki-67 Antibody for IHC especially useful for assessing germinal centers, basal proliferative zones, intestinal crypt compartments, and tumor cell populations with increased growth fraction.

The value of immunohistochemistry for Ki-67 lies in its ability to combine proliferation assessment with tissue morphology. In normal tissues, nuclear Ki-67 staining is usually confined to expected proliferative compartments, while differentiated or resting cells show little to no signal. In tumors, Ki-67 IHC antibody staining often highlights variable fractions of proliferating malignant nuclei, helping researchers examine growth patterns across carcinomas, lymphomas, sarcomas, and other neoplasms. The intensity and distribution of nuclear staining can therefore provide useful visual context when comparing different tumor areas or tissue types in research settings.

Ki-67 is expressed during G1, S, G2, and mitotic phases, but is generally not detected in resting G0 cells. At the subcellular level, the protein associates with the nucleus and shows characteristic changes in distribution during mitosis. This biology explains why immunohistochemistry staining with Ki-67 antibodies is widely used to identify proliferative activity rather than lineage alone. In FFPE sections, the expected finding is selective nuclear labeling rather than cytoplasmic or membranous signal, which helps support straightforward microscopic interpretation.

Ki-67 Antibody for IHC / Ki-67 IHC Antibody provides a valuable tool for immunohistochemistry-based evaluation of proliferating cells in both normal and cancer tissues. By highlighting nuclear expression of Ki-67 / MKI67 within intact histologic context, this antibody supports studies of tumor biology, tissue turnover, growth fraction, and cellular proliferation in pathology-oriented research.

This antibody is also part of a broader collection of [IHC antibodies validated by tissue microarray analysis](#), supporting consistent staining across normal and cancer tissues.

## Application Notes

1. Optimal dilution of the Ki-67 Antibody for IHC should be determined by the researcher.
2. This MKI67/Marker of proliferation Ki-67 antibody is recombinantly produced by expression in CHO cells.
3. Manual Protocol: Freshly cut sections should be used (less than 10 days between cutting and staining). Heat-induced antigen retrieval for 5 minutes in an autoclave at 121°C in pH 7.8 Target Retrieval Solution buffer. Apply the antibody at a dilution of 1:150 at 37°C for 60 minutes. Visualization of bound antibody by the EnVision Kit (Dako, Agilent) according to the manufacturer's directions.

## Immunogen

Recombinant human Ki67 protein fragment (around amino acids 2293-2478) (exact sequence is proprietary) was used as the immunogen for the Ki-67/Marker of proliferation Ki67 antibody.

## Storage

Ki-67/Marker of proliferation Ki67 antibody with sodium azide - store at 2 to 8°C; antibody without sodium azide - store at

-20 to -80oC.

## **Alternate Names**

MKI67 antibody, Ki67 antibody, Antigen KI-67 antibody, Proliferation marker antibody, Ki-67 proliferation marker antibody