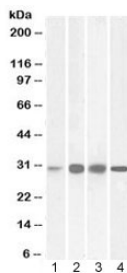


## Ketohexokinase Antibody (R36435)

Catalog No.	Formulation	Size
R36435-100UG	0.5 mg/ml in 1X TBS, pH7.3, with 0.5% BSA (US sourced) and 0.02% sodium azide	100 ug

[Bulk quote request](#)

<b>Availability</b>	1-3 business days
<b>Species Reactivity</b>	Human, Mouse, Rat, Pig
<b>Predicted Reactivity</b>	Dog, Cow
<b>Format</b>	Antigen affinity purified
<b>Host</b>	Goat
<b>Clonality</b>	Polyclonal (goat origin)
<b>Isotype</b>	Goat Ig
<b>Purity</b>	Antigen affinity
<b>UniProt</b>	P50053
<b>Gene ID</b>	3795
<b>Applications</b>	Western Blot : 0.01-0.03ug/ml ELISA (peptide) LOD : 1:128000
<b>Limitations</b>	This Ketohexokinase antibody is available for research use only.



Western blot testing of 1) human, 2) mouse, 3) rat, and 4) pig liver lysate with Ketohexokinase antibody at 0.03ug/ml. Predicted molecular weight: ~32 kDa.

### Description

Additional name(s) for this target protein: KHK; Hepatic fructokinase

### Application Notes

Optimal dilution of the Ketohexokinase antibody should be determined by the researcher.

## **Immunogen**

Amino acids RCLSQRWQRGGNASN were used as the immunogen for this Ketohexokinase antibody.

## **Storage**

Aliquot and store the Ketohexokinase antibody at -20oC.