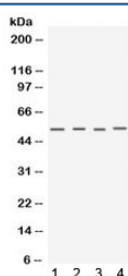


Keratocan Antibody (R31830)

Catalog No.	Formulation	Size
R31830	0.5mg/ml if reconstituted with 0.2ml sterile DI water	100 ug

Bulk quote request

Availability	1-3 business days
Species Reactivity	Human, Mouse
Format	Antigen affinity purified
Clonality	Polyclonal (rabbit origin)
Isotype	Rabbit IgG
Purity	Antigen affinity
Buffer	Lyophilized from 1X PBS with 2.5% BSA and 0.025% sodium azide
UniProt	O60938
Applications	Western Blot : 0.1-0.5ug/ml
Limitations	This Keratocan antibody is available for research use only.



Western blot testing of 1) mouse testis, 2) mouse skeletal muscle, 3) human MCF7 and 4) human A549 lysate with Keratocan antibody. Predicted molecular weight ~40 kDa but the mature protein can be observed ~52 kDa with possible 34/37 kDa breakdown products. (Ref 1)

Description

Keratocan (KTN), also known as keratan sulfate proteoglycan keratocan, is a protein that in humans is encoded by the KERA gene. It is mapped to 12q22. The protein encoded by this gene is a keratan sulfate proteoglycan that is involved in corneal transparency. Defects in this gene are a cause of autosomal recessive cornea plana 2 (CNA2). Keratan sulfate proteoglycans (KSPGs) are members of the small leucine-rich proteoglycan (SLRP) family. KSPGs, particularly keratocan, lumican and mimecan, are important to the transparency of the cornea.

Application Notes

Optimal dilution of the Keratocan antibody should be determined by the researcher.

Immunogen

Amino acids YLQNNLIETIPEKPFENATQLRWINLNKNKITN of human Keratocan were used as the immunogen for the Keratocan antibody.

Storage

After reconstitution, the Keratocan antibody can be stored for up to one month at 4oC. For long-term, aliquot and store at -20oC. Avoid repeated freezing and thawing.

References (1)