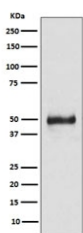


## Keratin 8 Antibody / Cytokeratin 8 [clone CIG-11] (RQ5132)

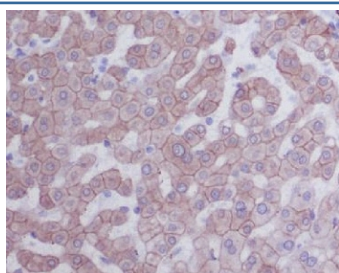
Catalog No.	Formulation	Size
RQ5132	Antibody in PBS with 0.02% sodium azide, 50% glycerol and 0.4-0.5mg/ml BSA	100 ul

[Bulk quote request](#)

Availability	1-2 weeks
Species Reactivity	Human
Format	Purified
Clonality	Rabbit Monoclonal
Isotype	Rabbit IgG
Clone Name	CIG-11
Purity	Affinity purified
UniProt	P05787
Applications	Western Blot : 1:10000-1:20000 Immunohistochemistry (FFPE) : 1:50-1:200
Limitations	This Keratin 8 antibody is available for research use only.



Western blot testing of human HaCat cell lysate with Keratin 8 antibody. Predicted molecular weight ~56 kDa.



IHC staining of FFPE human human liver with Keratin 8 antibody. HI-ER: boil tissue sections in pH6, 10mM citrate buffer, for 10-20 min and allow to cool before testing.

## Description

The KRT8 gene is a member of the type II keratin family clustered on the long arm of chromosome 12. Type I and type II keratins heteropolymerize to form intermediate-sized filaments in the cytoplasm of epithelial cells. The product of this gene typically dimerizes with keratin 18 to form an intermediate filament in simple single-layered epithelial cells. This protein plays a role in maintaining cellular structural integrity and also functions in signal transduction and cellular differentiation. Mutations in this gene cause cryptogenic cirrhosis. [RefSeq]

## Application Notes

Optimal dilution of the Keratin 8 antibody should be determined by the researcher.

## Immunogen

A synthetic peptide specific to human Cytokeratin 8 / KRT8 was used as the immunogen for the Keratin 8 antibody.

## Storage

Store the Keratin 8 antibody at -20oC.