

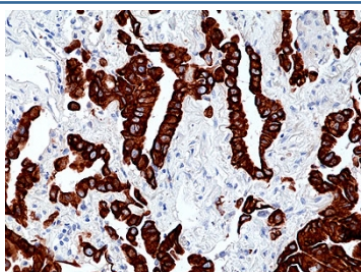
## Keratin 7 Antibody / KRT7 / Cytokeratin 7 [clone RM416] (R20432)

Catalog No.	Formulation	Size
R20432-0.1ML	Antibody in PBS with 50% glycerol, 1% BSA and 0.09% sodium azide	100 ul

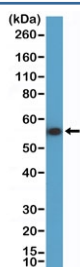
Recombinant **RABBIT MONOCLONAL**

[Bulk quote request](#)

Availability	1-3 business days
Species Reactivity	Human
Format	Purified
Host	Rabbit
Clonality	Recombinant Rabbit Monoclonal
Isotype	Rabbit IgG
Clone Name	RM416
Purity	Protein A purified from animal origin-free supernatant
UniProt	P08729
Localization	Cytoplasm
Applications	Immunohistochemistry (FFPE) : 1:50 -1:100 Western Blot : 1:1000-1:10000
Limitations	This recombinant Keratin 7 antibody is available for research use only.



IHC staining of FFPE human lung adenocarcinoma tissue with recombinant Keratin 7 antibody at 1:100.



Western blot testing of human HeLa cell lysate using recombinant Keratin 7 antibody at 1:10,000 dilution. Predicted molecular weight ~51 kDa.

## Description

This antibody reacts to human Cytokeratin 7/CK-7/Keratin 7/KRT7.

## Application Notes

The stated application concentrations are suggested starting points. Titration of the recombinant Keratin 7 antibody may be required due to differences in protocols and secondary/substrate sensitivity.

## Immunogen

A peptide corresponding to the C-terminus of human Cytokeratin-7 was used as the immunogen for the recombinant Keratin 7 antibody.

## Storage

Store the recombinant Keratin 7 antibody at -20oC.