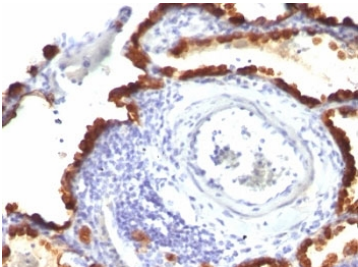


## Keratin 7 Antibody Cocktail [clone KRT7/760 + KRT7/903] (V2659)

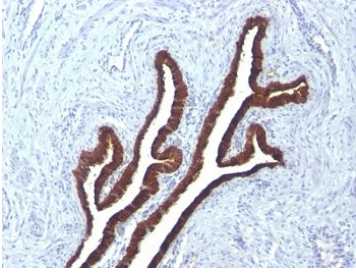
Catalog No.	Formulation	Size
V2659-100UG	0.2 mg/ml in 1X PBS with 0.1 mg/ml BSA (US sourced) and 0.05% sodium azide	100 ug
V2659-20UG	0.2 mg/ml in 1X PBS with 0.1 mg/ml BSA (US sourced) and 0.05% sodium azide	20 ug
V2659SAF-100UG	1 mg/ml in 1X PBS; BSA free, sodium azide free	100 ug
V2659IHC-7ML	Prediluted in 1X PBS with 0.1 mg/ml BSA (US sourced) and 0.05% sodium azide; *For IHC use only*	7 ml

[Bulk quote request](#)

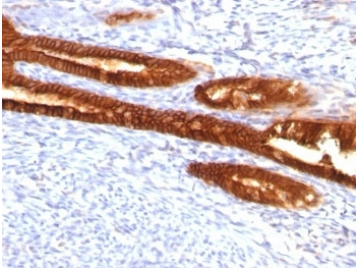
<b>Availability</b>	1-3 business days
<b>Species Reactivity</b>	Human
<b>Format</b>	Purified
<b>Host</b>	Mouse
<b>Clonality</b>	Monoclonal (mouse origin)
<b>Isotype</b>	Mouse IgG1, kappa
<b>Clone Name</b>	KRT7/760 + KRT7/903
<b>Purity</b>	Protein G affinity chromatography
<b>UniProt</b>	P08729
<b>Localization</b>	Cytoplasmic
<b>Applications</b>	Flow Cytometry : 0.5-1ug/10 <sup>6</sup> cells Immunofluorescence : 0.5-1ug/ml Immunohistochemistry (FFPE) : 1-2ug/ml for 30 min at RT
<b>Limitations</b>	This Keratin 7 antibody cocktail is available for research use only.



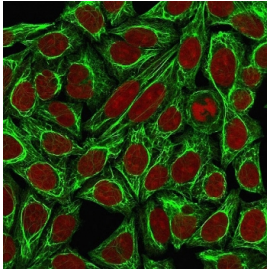
IHC: Formalin-fixed, paraffin-embedded human lung carcinoma stained with Keratin 7 antibody (KRT7/760 + KRT7/903)



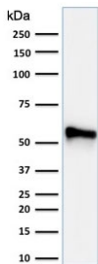
IHC: Formalin-fixed, paraffin-embedded human ovarian carcinoma stained with Keratin 7 antibody (KRT7/760 + KRT7/903)



IHC: Formalin-fixed, paraffin-embedded human endometrial carcinoma stained with Keratin 7 antibody (KRT7/760 + KRT7/903)



Immunofluorescent staining of methanol-fixed human HeLa cells with Cytokeratin 7 antibody cocktail (green, clones KRT7/760 + KRT7/903) and Reddot nuclear counterstain (red).



Western blot testing of human HeLa cell lysate with Cytokeratin 7 antibody cocktail (clones KRT7/760 + KRT7/903).

## Description

It recognizes an intermediate filament protein (IFP) of 55 kDa, which is identified as cytokeratin 7. This mAb is highly specific to cytokeratin 7 and shows no cross-reaction with other IFPs. Cytokeratin 7 is a basic cytokeratin, which is found in most glandular and transitional epithelia but not in the stratified squamous epithelia. Keratin 7 is expressed in the epithelial cells of ovary, lung, and breast but not of colon, prostate, or gastrointestinal tract. This mAb is highly useful in distinguishing ovarian carcinomas (keratin 7+) from colon carcinomas (keratin 7-).

## Application Notes

Optimal dilution of the Keratin 7 antibody cocktail should be determined by the researcher.

1. Staining of formalin-fixed tissues requires boiling tissue sections in 10mM Tris buffer with 1mM EDTA, pH 9.0, for 10-20 min followed by cooling at RT for 20 min
2. The prediluted format is supplied in a dropper bottle and is optimized for use in IHC. After epitope retrieval step (if required), drip mAb solution onto the tissue section and incubate at RT for 30 min.

## **Immunogen**

Recombinant full-length human KRT7 protein was used as the immunogen for the Keratin 7 antibody cocktail.

## **Storage**

Store the Keratin 7 antibody cocktail at 2-8oC (with azide) or aliquot and store at -20oC or colder (without azide).