

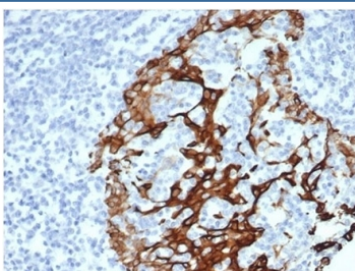
Keratin 6A Antibody / Cytokeratin 6A [clone KRT6/3997R] (V8960)

Catalog No.	Formulation	Size
V8960-100UG	0.2 mg/ml in 1X PBS with 0.1 mg/ml BSA (US sourced), 0.05% sodium azide	100 ug
V8960-20UG	0.2 mg/ml in 1X PBS with 0.1 mg/ml BSA (US sourced), 0.05% sodium azide	20 ug
V8960SAF-100UG	1 mg/ml in 1X PBS; BSA free, sodium azide free	100 ug

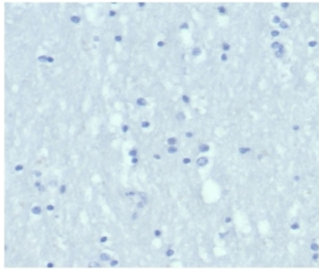
Recombinant **RABBIT MONOCLONAL**

[Bulk quote request](#)

Availability	1-3 business days
Species Reactivity	Human
Format	Purified
Host	Rabbit
Clonality	Recombinant Rabbit Monoclonal
Isotype	Rabbit IgG
Clone Name	KRT6/3997R
Purity	Protein A/G affinity
UniProt	P02538
Localization	Cytoplasm
Applications	Immunohistochemistry (FFPE) : 1-2ug/ml
Limitations	This Keratin 6A antibody is available for research use only.



IHC staining of FFPE human prostate tissue with Keratin 6A antibody (clone KRT6/3997R). HIER: boil tissue sections in pH 9 10mM Tris with 1mM EDTA for 20 min and allow to cool before testing.



Negative control: IHC staining of FFPE human brain tissue using Keratin 6A antibody (clone KRT6/3997R) at 2ug/ml in PBS for 30min RT. HIER: boil tissue sections in pH 9 10mM Tris with 1mM EDTA for 20 min and allow to cool before testing.

Description

Keratin 6A antibody targets Cytokeratin 6A, a type II intermediate filament protein encoded by the KRT6A gene and classified within the cytoskeletal keratin family. Cytokeratin 6A forms heterodimers with type I keratins and contributes to the structural framework of stratified epithelial cells. Unlike constitutively expressed keratins found in stable epithelia, Keratin 6A is characteristically inducible and is associated with dynamic epithelial states, particularly those involving rapid proliferation, tissue remodeling, or cellular stress responses.

Keratin 6A antibody, also referred to as Cytokeratin 6A antibody or KRT6A antibody, is especially useful in the study of basal and suprabasal epithelial compartments. In normal tissues, Cytokeratin 6A expression is limited but becomes prominent in activated keratinocytes during wound repair, inflammation, and mechanical stress. Its cytoplasmic localization reflects its role in reinforcing the intermediate filament network, allowing epithelial cells to withstand altered mechanical and biological demands during regeneration and repair processes.

In pathology-focused research, Keratin 6A antibody is widely applied as a marker of squamous lineage commitment and aberrant epithelial differentiation. Increased Cytokeratin 6A expression is frequently observed in squamous cell carcinomas, including those arising in skin, lung, head and neck, cervix, and upper aerodigestive tract. It is also associated with hyperproliferative lesions and basal-like epithelial phenotypes, where it reflects altered differentiation programs rather than terminal epithelial maturation. Because Cytokeratin 6A is tightly linked to epithelial plasticity, antibodies against this target are valuable tools for investigating tumor progression, epithelial stress signaling, and disease-associated keratin remodeling. Recombinant Keratin 6A antibody reagents provide consistent performance for detecting Keratin 6A expression in research applications requiring reliable assessment of epithelial identity and activation states.

Application Notes

Optimal dilution of the Keratin 6A antibody should be determined by the researcher.

Immunogen

A recombinant protein fragment was used as the immunogen for the Keratin 6A antibody.

Storage

Aliquot the Keratin 6A antibody and store frozen at -20oC or colder. Avoid repeated freeze-thaw cycles.

