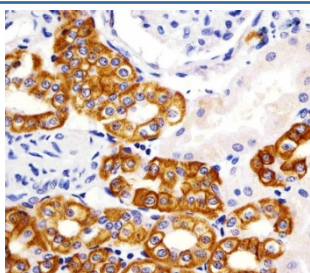


Keratin 19 Antibody / Cytokeratin 19 [clone 979CT14.3.1] (F54479)

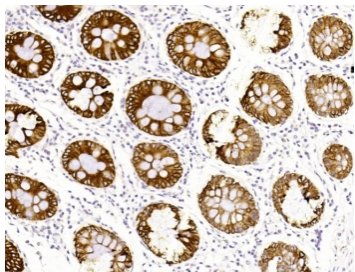
Catalog No.	Formulation	Size
F54479-0.2ML	In 1X PBS, pH 7.4, with 0.09% sodium azide	0.2 ml
F54479-0.05ML	In 1X PBS, pH 7.4, with 0.09% sodium azide	0.05 ml

[Bulk quote request](#)

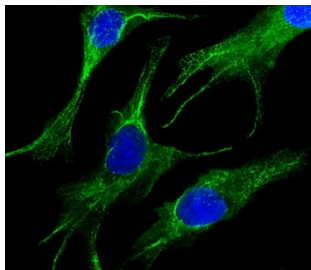
Availability	1-3 business days
Species Reactivity	Human
Format	Purified
Host	Mouse
Clonality	Monoclonal (mouse origin)
Isotype	IgG1,k
Clone Name	979CT14.3.1
Purity	Protein G affinity
UniProt	P08727
Localization	Cytoplasmic
Applications	Immunohistochemistry (FFPE) : 1:25 Immunofluorescence : 1:25 Western Blot : 1:500-1:2000
Limitations	This Keratin 19 antibody is available for research use only.



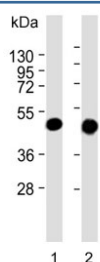
IHC testing of FFPE human kidney tissue with Keratin 19 antibody. HIER: steam section in pH6 citrate buffer for 20 min and allow to cool prior to staining.



IHC testing of FFPE human colon tissue with Keratin 19 antibody. HIER: steam section in pH6 citrate buffer for 20 min and allow to cool prior to staining.



Immunofluorescent staining of fixed and permeabilized human HepG2 cells with Keratin 19 antibody (green) and DAPI nuclear stain (blue).



Western blot testing of human 1) HepG2 and 2) MCF7 cell lysate with Keratin 19 antibody. Predicted molecular weight ~43 kDa.

Description

Involved in the organization of myofibers. Together with KRT8, helps to link the contractile apparatus to dystrophin at the costameres of striated muscle.

Application Notes

The stated application concentrations are suggested starting points. Titration of the Keratin 19 antibody may be required due to differences in protocols and secondary/substrate sensitivity.

Immunogen

Recombinant human protein was used as the immunogen for the Keratin 19 antibody.

Storage

Aliquot the Keratin 19 antibody and store frozen at -20°C or colder. Avoid repeated freeze-thaw cycles.