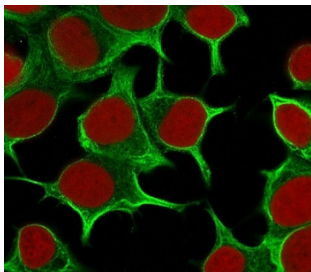


Keratin 19 Antibody [clone CTKN19-1] (V7144)

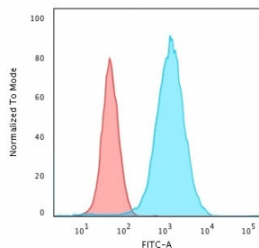
Catalog No.	Formulation	Size
V7144-100UG	0.2 mg/ml in 1X PBS with 0.1 mg/ml BSA (US sourced) and 0.05% sodium azide	100 ug
V7144-20UG	0.2 mg/ml in 1X PBS with 0.1 mg/ml BSA (US sourced) and 0.05% sodium azide	20 ug
V7144SAF-100UG	1 mg/ml in 1X PBS; BSA free, sodium azide free	100 ug
V7144IHC-7ML	Prediluted in 1X PBS with 0.1 mg/ml BSA (US sourced) and 0.05% sodium azide; *For IHC use only*	7 ml

[Bulk quote request](#)

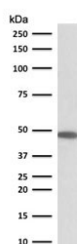
Availability	1-3 business days
Species Reactivity	Human
Format	Purified
Host	Mouse
Clonality	Monoclonal (mouse origin)
Isotype	Mouse IgG2a, kappa
Clone Name	CTKN19-1
Purity	Protein G affinity chromatography
UniProt	P08727
Localization	Cytoplasmic
Applications	<p>Western Blot : 1-2ug/ml</p> <p>Flow Cytometry : 1-2ug/10⁶ cells</p> <p>Immunofluorescence : 1-2ug/ml</p> <p>Immunohistochemistry (FFPE) : 1-2ug/ml for 30 min at RT</p> <p>Prediluted IHC Only Format : incubate for 30 min at RT (1)</p>
Limitations	This Keratin 19 antibody is available for research use only.



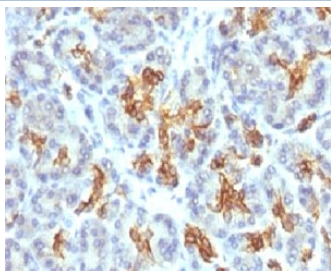
Immunofluorescent staining of permeabilized human MCF7 cells with Cytokeratin 19 antibody (clone CTKN19-1, green) and Reddot nuclear stain (red).



Flow cytometry testing of methanol-fixed human MCF7 cells with Cytokeratin 19 antibody (clone CTKN19-1); Red=isotype control, Blue= Cytokeratin 19 antibody.



Western blot testing of human HepG2 antibody with Cytokeratin 19 antibody (clone CTKN19-1). Predicted molecular weight ~43 kDa.



IHC testing of FFPE human pancreas and Keratin 19 antibody (clone CTKN19-1). FFPE testing requires sections to be boiled in pH 9 10mM Tris with 1mM EDTA for 10-20 minutes, followed by cooling at RT for 20 minutes, prior to staining.



IHC testing of FFPE human ovarian carcinoma and Keratin 19 antibody (clone CTKN19-1). FFPE testing requires sections to be boiled in pH 9 10mM Tris with 1mM EDTA for 10-20 minutes, followed by cooling at RT for 20 minutes, prior to staining.

Description

Cytokeratin 19 is a member of the keratin family. The keratins are intermediate filament proteins responsible for the structural integrity of epithelial cells and are subdivided into cytokeratins and hair keratins. Cytokeratin 19 is a type I keratin. The type I cytokeratins consist of acidic proteins which are arranged in pairs of heterotypic keratin chains. Unlike its related family members, this smallest known acidic cytokeratin is not paired with a basic cytokeratin in epithelial cells. It is specifically found in the periderm, the transiently superficial layer that envelops the developing epidermis. The type I cytokeratins are clustered in a region of chromosome 17q12-q21. [Wiki]

Application Notes

Titration of the Keratin 19 antibody may be required for optimal performance.

1. The prediluted format is supplied in a dropper bottle and is optimized for use in IHC. After epitope retrieval step (if required), drip mAb solution onto the tissue section and incubate at RT for 30 min.

Immunogen

Recombinant human KRT19 protein was used as the immunogen for the Keratin 19 antibody.

Storage

Store the Keratin 19 antibody at 2-8°C (with azide) or aliquot and store at -20°C or colder (without azide).