

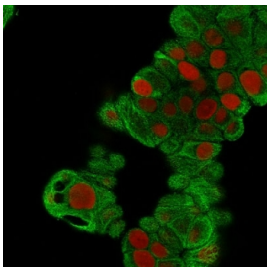
Keratin 19 Antibody [clone BA17] (V3137)

Catalog No.	Formulation	Size
V3137-100UG	0.2 mg/ml in 1X PBS with 0.1 mg/ml BSA (US sourced) and 0.05% sodium azide	100 ug
V3137-20UG	0.2 mg/ml in 1X PBS with 0.1 mg/ml BSA (US sourced) and 0.05% sodium azide	20 ug
V3137SAF-100UG	1 mg/ml in 1X PBS; BSA free, sodium azide free	100 ug
V3137IHC-7ML	Prediluted in 1X PBS with 0.1 mg/ml BSA (US sourced) and 0.05% sodium azide; *For IHC use only*	7 ml

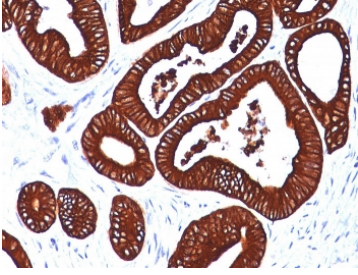
 Citations (20)

[Bulk quote request](#)

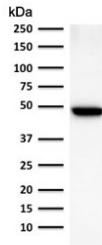
Availability	1-3 business days
Species Reactivity	Human
Format	Purified
Host	Mouse
Clonality	Monoclonal (mouse origin)
Isotype	Mouse IgG1, kappa
Clone Name	BA17
Purity	Protein G affinity chromatography
UniProt	P08727
Localization	Cytoplasmic
Applications	Western Blot : 1-2ug/ml Immunofluorescence : 1-2ug/ml Immunohistochemistry (FFPE) : 1-2ug/ml for 30 min at RT
Limitations	This Keratin 19 antibody is available for research use only.



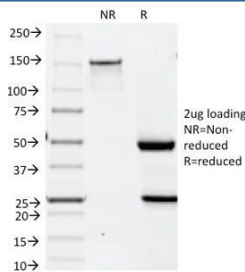
Immunofluorescent staining of MeOH fixed human MCF7 cells with Keratin 19 antibody (clone BA17, green) and Reddot nuclear stain (red).



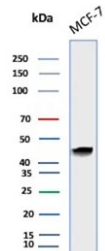
IHC analysis of formalin-fixed, paraffin-embedded human colon carcinoma stained with Keratin 19 antibody (clone BA17).



Western blot testing of human lung lysate with Keratin 19 antibody (clone BA17).
Predicted molecular weight ~43 kDa.



SDS-PAGE analysis of purified, BSA-free Keratin 19 antibody (clone BA17) as confirmation of integrity and purity.



Western blot testing of human MCF7 cell lysate with Keratin 19 antibody (clone BA17).
Predicted molecular weight ~43 kDa.

Description

This Ab reacts with the rod domain of human cytokeratin 19 (CK19), a polypeptide of 40kDa. CK19 is expressed in sweat gland, mammary gland ductal and secretory cells, bile ducts, gastrointestinal tract, bladder urothelium, oral epithelia, esophagus, and ectocervical epithelium. Anti-CK19 reacts with a wide variety of epithelial malignancies including adenocarcinomas of the colon, stomach, pancreas, biliary tract, liver, and breast. Perhaps the most useful application is the identification of thyroid carcinoma of the papillary type, although 50%-60% of follicular carcinomas are also labeled. Anti-CK19 is a useful marker for detection of tumor cells in lymph nodes, peripheral blood, bone marrow and breast cancer.

Application Notes

The optimal dilution of the Keratin 19 antibody for each application should be determined by the researcher.

1. Staining of formalin-fixed tissues requires boiling tissue sections in pH 9 10mM Tris with 1mM EDTA for 10-20 min followed by cooling at RT for 20 minutes.
2. The prediluted format is supplied in a dropper bottle and is optimized for use in IHC. After epitope retrieval step (if required), drip mAb solution onto the tissue section and incubate at RT for 30 min.

Immunogen

Human mammary epithelial organoids were used as the immunogen for this Keratin 19 antibody.

Storage

Store the Keratin 19 antibody at 2-8oC (with azide) or aliquot and store at -20oC or colder (without azide).