

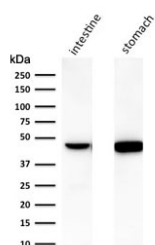
## Keratin 18 Antibody [clone C-04 or Ks18.04] (V2675)

| Catalog No.    | Formulation   | Size   |
|----------------|---|--------|
| V2675-100UG    | 0.2 mg/ml in 1X PBS with 0.1 mg/ml BSA (US sourced) and 0.05% sodium azide                      | 100 ug |
| V2675-20UG     | 0.2 mg/ml in 1X PBS with 0.1 mg/ml BSA (US sourced) and 0.05% sodium azide                      | 20 ug  |
| V2675SAF-100UG | 1 mg/ml in 1X PBS; BSA free, sodium azide free  | 100 ug |
| V2675IHC-7ML   | Prediluted in 1X PBS with 0.1 mg/ml BSA (US sourced) and 0.05% sodium azide; *For IHC use only* | 7 ml   |

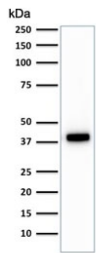
 Citations (7)

[Bulk quote request](#)

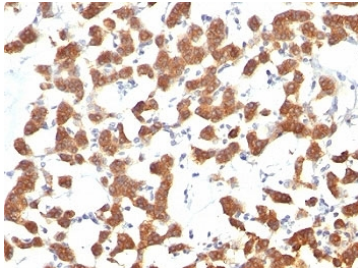
|                    |  |
|--------------------|--|
| Availability       | 1-3 business days  |
| Species Reactivity | Human, Mouse, Rat  |
| Format             | Purified   |
| Host               | Mouse  |
| Clonality          | Monoclonal (mouse origin)  |
| Isotype            | Mouse IgG1, kappa  |
| Clone Name         | C-04 or Ks18.04  |
| Purity             | Protein G affinity chromatography  |
| UniProt            | P05783   |
| Localization       | Cytoplasmic  |
| Applications       | Flow Cytometry : 1-2ug/10 <sup>6</sup> cells<br>Western Blot : 1-2ug/ml<br>Immunohistochemistry (FFPE) : 1-2ug/ml for 30 min at RT |
| Limitations        | This Keratin 18 antibody is available for research use only.   |



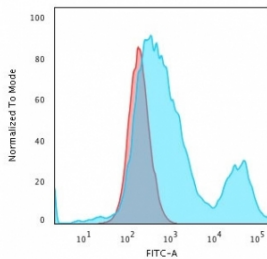
Western blot testing of human intestine and stomach tissue lysate with Keratin 18 antibody (clone C-04). Expected molecular weight: 46-50 kDa.



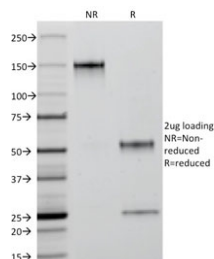
Western blot testing of HCT116 cell lysate with Cytokeratin 18 antibody (clone C-04).  
Expected molecular weight: 46-50 kDa.



IHC analysis of formalin-fixed, paraffin-embedded human thyroid carcinoma stained with Keratin 18 antibody (clone C-04).



Flow cytometry testing of PFA fixed human HeLa cells with Keratin 18 antibody (clone C-04); Red=isotype control, Blue= Keratin 18 antibody.



SDS-PAGE analysis of purified, BSA-free Keratin 18 antibody (clone C-04) as confirmation of integrity and purity.

## Description

This mAb reacts with a wide variety of simple epithelia. It does not react with stratified squamous epithelia. It reacts with epithelial tumors of the gastrointestinal tract, lung, breast, pancreas, ovary, and thyroid. Cytokeratin 18, which belongs to the type A (acidic) subfamily of low molecular weight keratins, exists in combination with cytokeratin 8. It was reported that tissues from gastrointestinal tract are positive for both cytokeratin 8 and 18 but do not contain cytokeratin 14. Tissues from gastrointestinal tract, respiratory tract and urogenital tract, as well as endocrine and exocrine tissues and mesothelial cells are positive for cytokeratin 18.

## Application Notes

Optimal dilution of the Keratin 18 antibody should be determined by the researcher.

1. Staining of formalin-fixed tissues requires boiling tissue sections in pH 9 10mM Tris with 1mM EDTA for 10-20 min followed by cooling at RT for 20 min
2. The prediluted format is supplied in a dropper bottle and is optimized for use in IHC. After epitope retrieval step (if required), drip mAb solution onto the tissue section and incubate at RT for 30 min.

## Immunogen

A cytoskeletal preparation from A431 cells was used as the immunogen for the Keratin 18 antibody.

## Storage

Store the Keratin 18 antibody at 2-8°C (with azide) or aliquot and store at -20°C or colder (without azide).