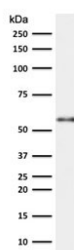


Keratin 10 Antibody / KRT10 [clone CTKN10-1] (V7113)

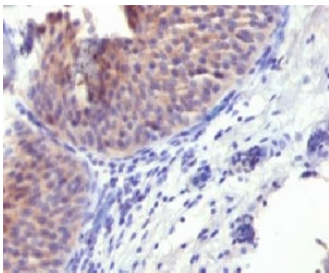
Catalog No.	Formulation	Size
V7113-100UG	0.2 mg/ml in 1X PBS with 0.1 mg/ml BSA (US sourced) and 0.05% sodium azide	100 ug
V7113-20UG	0.2 mg/ml in 1X PBS with 0.1 mg/ml BSA (US sourced) and 0.05% sodium azide	20 ug
V7113SAF-100UG	1 mg/ml in 1X PBS; BSA free, sodium azide free	100 ug
V7113IHC-7ML	Prediluted in 1X PBS with 0.1 mg/ml BSA (US sourced) and 0.05% sodium azide; *For IHC use only*	7 ml

[Bulk quote request](#)

Availability	1-3 business days
Species Reactivity	Human
Format	Purified
Host	Mouse
Clonality	Monoclonal (mouse origin)
Isotype	Mouse IgG1, kappa
Clone Name	CTKN10-1
Purity	Protein G affinity chromatography
UniProt	P13645
Localization	Cytoplasmic
Applications	Western Blot : 1-2ug/ml Immunohistochemistry (FFPE) : 1-2ug/ml for 30 min at RT Prediluted IHC Only Format : incubate for 30 min at RT (1)
Limitations	This Keratin 10 antibody is available for research use only.



Western blot testing of human thymus lysate with Keratin 10 antibody (clone CTKN10-1).
Predicted molecular weight ~59 kDa.



IHC testing of FFPE human bladder carcinoma and Keratin 10 antibody. Staining of formalin-fixed tissues requires boiling tissue sections in pH 9 10mM Tris with 1mM EDTA for 10-20 min followed by cooling at RT for 20 min.

Description

Keratin-10 is a member of the type I (acidic) cytokeratin family, which belongs to the superfamily of intermediate filament (IF) proteins. Keratins are heteropolymeric structural proteins which form the intermediate filament. These filaments, along with actin microfilaments and microtubules, compose the cytoskeleton of epithelial cells. Mutations in this gene are associated with epidermolytic hyperkeratosis. This gene is located within a cluster of keratin family members on chromosome 17q21. Keratin 10 has been shown to interact with AKT1. [Wiki]

Application Notes

Optimal dilution of the Keratin 10 antibody should be determined by the researcher.

1. The prediluted format is supplied in a dropper bottle and is optimized for use in IHC. After epitope retrieval step (if required), drip mAb solution onto the tissue section and incubate at RT for 30 min.

Immunogen

Recombinant human KRT10 protein was used as the immunogen for the Keratin 10 antibody.

Storage

Store the Keratin 10 antibody at 2-8oC (with azide) or aliquot and store at -20oC or colder (without azide).