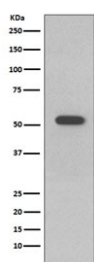


Keratin 10 Antibody / Cytokeratin 10 [clone EEF-11] (RQ5408)

Catalog No.	Formulation	Size
RQ5408	Antibody in PBS with 0.02% sodium azide, 50% glycerol and 0.4-0.5mg/ml BSA	100 ul

[Bulk quote request](#)

Availability	1-2 weeks
Species Reactivity	Human
Format	Purified
Clonality	Rabbit Monoclonal
Isotype	Rabbit IgG
Clone Name	EEF-11
Purity	Affinity purified
UniProt	P13645
Applications	Western Blot : 1:500-1:2000
Limitations	This Keratin 10 antibody is available for research use only.



Western blot testing of human A431 cell lysate with Keratin 10 antibody. Predicted molecular weight ~59 kDa.

Description

The KRT10 gene encodes a member of the type I (acidic) cytokeratin family, which belongs to the superfamily of intermediate filament (IF) proteins. Keratins are heteropolymeric structural proteins which form the intermediate filament. These filaments, along with actin microfilaments and microtubules, compose the cytoskeleton of epithelial cells. Mutations in this gene are associated with epidermolytic hyperkeratosis. [RefSeq]

Application Notes

Optimal dilution of the Keratin 10 antibody should be determined by the researcher.

Immunogen

A synthetic peptide specific to human Cytokeratin 10 / KRT10 was used as the immunogen for the Keratin 10 antibody.

Storage

Store the Keratin 10 antibody at -20oC.