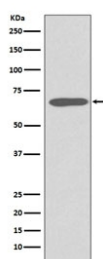


Keratin 1 Antibody / Cytokeratin 1 [clone GHO-11] (RQ5048)

| Catalog No. | Formulation | Size |
|-------------|--|--------|
| RQ5048 | Antibody in PBS with 0.02% sodium azide, 50% glycerol and 0.4-0.5mg/ml BSA | 100 ul |

[Bulk quote request](#)

| | |
|--------------------|---|
| Availability | 1-2 weeks |
| Species Reactivity | Human |
| Format | Purified |
| Host | Rabbit |
| Clonality | Rabbit Monoclonal |
| Isotype | Rabbit IgG |
| Clone Name | GHO-11 |
| Purity | Affinity purified |
| UniProt | P04264 |
| Applications | Western Blot : 1:5000-1:20000 |
| Limitations | This Keratin 1 antibody is available for research use only. |



Western blot testing of human skin lysate with Keratin 1 antibody. Predicted molecular weight ~67 kDa.

Description

Keratin 1 is a member of the keratin gene family. The type II cytokeratins consist of basic or neutral proteins which are arranged in pairs of heterotypic keratin chains coexpressed during differentiation of simple and stratified epithelial tissues. This type II cytokeratin is specifically expressed in the spinous and granular layers of the epidermis with family member KRT10 and mutations in these genes have been associated with bullous congenital ichthyosiform erythroderma. [RefSeq]

Application Notes

Optimal dilution of the Keratin 1 antibody should be determined by the researcher.

Immunogen

A synthetic peptide specific to human Cytokeratin 1 / KRT1 was used as the immunogen for the Keratin 1 antibody.

Storage

Store the Keratin 1 antibody at -20oC.