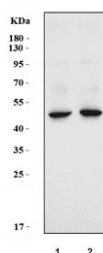


Kera Antibody / Keratocan / Ktcn (RQ7006)

Catalog No.	Formulation	Size
RQ7006	0.5mg/ml if reconstituted with 0.2ml sterile DI water	100 ug

Bulk quote request

Availability	1-3 business days
Species Reactivity	Mouse, Rat
Format	Antigen affinity purified
Clonality	Polyclonal (rabbit origin)
Isotype	Rabbit IgG
Purity	Antigen affinity purified
Buffer	Lyophilized from 1X PBS with 2% Trehalose
UniProt	O35367
Applications	Western Blot : 0.5-1 ug/ml Direct ELISA : 0.1-0.5ug/ml
Limitations	This Kera antibody is available for research use only.



Western blot testing of 1) rat eye and 2) mouse eye lysate with Kera antibody. Predicted molecular weight ~41 kDa.

Description

Keratocan (KTN) also known as keratan sulfate proteoglycan keratocan, is a protein that in humans is encoded by the KERA gene. The protein encoded by this gene is a keratan sulfate proteoglycan that is involved in corneal transparency. Defects in this gene are a cause of autosomal recessive cornea plana 2 (CNA2).

Application Notes

Optimal dilution of the Kera antibody should be determined by the researcher.

Immunogen

Recombinant mouse protein (amino acids R73-K115) was used as the immunogen for the Kera antibody.

Storage

After reconstitution, the Kera antibody can be stored for up to one month at 4°C. For long-term, aliquot and store at -20°C. Avoid repeated freezing and thawing.