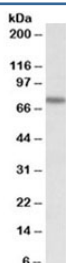


KEAP1 Antibody (R34041)

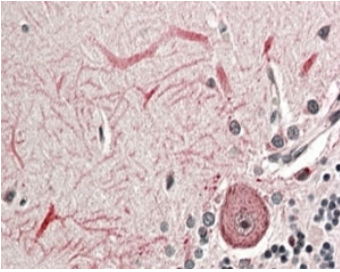
Catalog No.	Formulation	Size
R34041-100UG	0.5 mg/ml in 1X TBS, pH7.3, with 0.5% BSA (US sourced) and 0.02% sodium azide	100 ug

[Bulk quote request](#)

Availability	1-3 business days
Species Reactivity	Human, Mouse
Predicted Reactivity	Cow, Dog, Pig, Rat
Format	Antigen affinity purified
Host	Goat
Clonality	Polyclonal (goat origin)
Isotype	Goat Ig
Purity	Antigen affinity
Gene ID	9817
Applications	Western Blot : 0.2-0.6ug/ml Immunohistochemistry (FFPE) : 3-5ug/ml ELISA (peptide) LOD : 1:32000
Limitations	This KEAP1 antibody is available for research use only.



Western blot testing of NIH3T3 lysate with KEAP1 antibody at 0.2ug/ml. Predicted molecular weight ~70 kDa.



IHC staining of FFPE human cerebellum with KEAP1 antibody at 4ug/ml. HIER: steamed with pH6 citrate buffer, AP-staining.

Description

Additional name(s) for this target protein: Kelch-like ECH-associated protein 1

Application Notes

Optimal dilution of the KEAP1 antibody should be determined by the researcher.

Immunogen

Amino acids EVTPSQHGNTFS were used as the immunogen for this KEAP1 antibody.

Storage

Aliquot and store the KEAP1 antibody at -20oC.