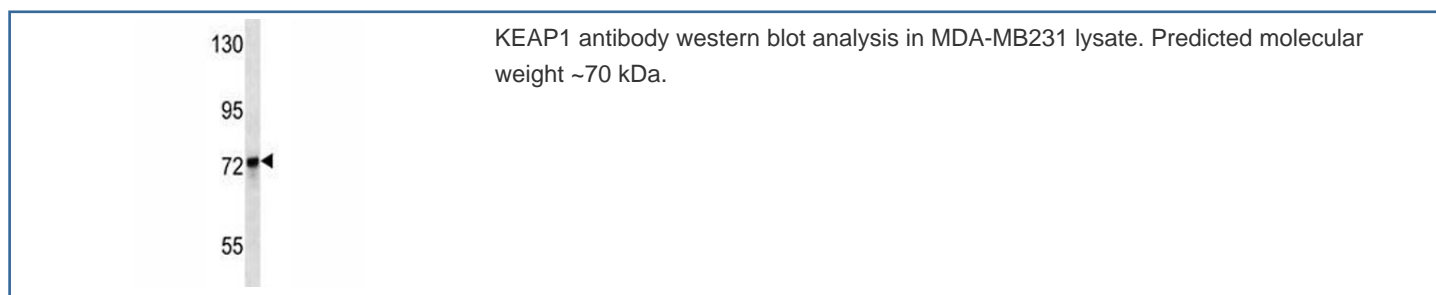


## KEAP1 Antibody [clone 297CT6.1.6] (F40314)

Catalog No.	Formulation	Size
F40314-0.4ML	In 1X PBS, pH 7.4, with 0.09% sodium azide	0.4 ml
F40314-0.08ML	In 1X PBS, pH 7.4, with 0.09% sodium azide	0.08 ml

[Bulk quote request](#)

<b>Availability</b>	1-3 business days
<b>Species Reactivity</b>	Human
<b>Predicted Reactivity</b>	Pig
<b>Format</b>	Purified
<b>Clonality</b>	Monoclonal (mouse origin)
<b>Isotype</b>	Mouse IgM, k
<b>Clone Name</b>	297CT6.1.6
<b>Purity</b>	Purified
<b>UniProt</b>	Q14145
<b>Applications</b>	Western Blot : 1:100
<b>Limitations</b>	This KEAP1 antibody is available for research use only.



## Description

This gene encodes a protein containing KELCH-1 like domains, as well as a BTB/POZ domain. Kelch-like ECH-associated protein 1 interacts with NF-E2-related factor 2 in a redox-sensitive manner and the dissociation of the proteins in the cytoplasm is followed by transportation of NF-E2-related factor 2 to the nucleus. This interaction results in the expression of the catalytic subunit of gamma-glutamylcysteine synthetase. Two alternatively spliced transcript variants encoding the same isoform have been found for this gene.

## Application Notes

Titration of the KEAP1 antibody may be required due to differences in protocols and secondary/substrate sensitivity.

## Immunogen

A portion of amino acids 422-449 from the human protein was used as the immunogen for this KEAP1 antibody.

## Storage

Aliquot the KEAP1 antibody and store frozen at -20oC or colder. Avoid repeated freeze-thaw cycles.