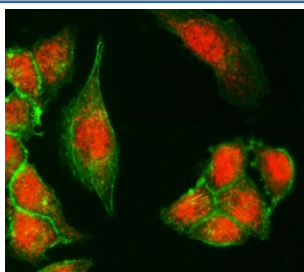


KDM6A Antibody (RQ6648)

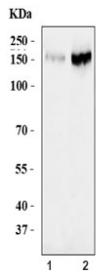
Catalog No.	Formulation	Size
RQ6648	0.5mg/ml if reconstituted with 0.2ml sterile DI water	100 ug

Bulk quote request

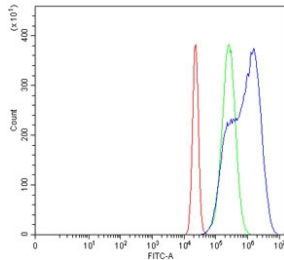
Availability	1-3 business days
Species Reactivity	Human
Format	Antigen affinity purified
Clonality	Polyclonal (rabbit origin)
Isotype	Rabbit IgG
Purity	Antigen affinity purified
Buffer	Lyophilized from 1X PBS with 2% Trehalose
UniProt	O15550
Localization	Nuclear
Applications	Western Blot : 1-2ug/ml Immunofluorescence (FFPE) : 5ug/ml Flow Cytometry : 1-3ug/million cells Direct ELISA : 0.1-0.5ug/ml
Limitations	This KDM6A antibody is available for research use only.



Immunofluorescent staining of FFPE human SiHa cells with KDM6A antibody (Dylight 594-conjugated secondary, red) and Phalloidin-iFluor 488 conjugate (green). HIER: steam section in pH6 citrate buffer for 20 min.



Western blot testing of human 1) MCF7 and 2) HEK293 cell lysate with KDM6A antibody. Predicted molecular weight ~154 kDa.



Flow cytometry testing of human HeLa cells with KDM6A antibody at 1 ug/million cells (blocked with goat sera); Red=cells alone, Green=isotype control, Blue= KDM6A antibody.

Description

Lysine-specific demethylase 6A also known as Ubiquitously transcribed tetratricopeptide repeat, X chromosome (UTX), is a protein which in humans is encoded by the KDM6A gene. This gene is located on the X chromosome and is the corresponding locus to a Y-linked gene which encodes a tetratricopeptide repeat (TPR) protein. The encoded protein of this gene contains a JmjC-domain and catalyzes the demethylation of tri/dimethylated histone H3. Multiple alternatively spliced transcript variants have been found for this gene.

Application Notes

Optimal dilution of the KDM6A antibody should be determined by the researcher.

Immunogen

Recombinant human protein (amino acids A391-A704) was used as the immunogen for the KDM6A antibody.

Storage

After reconstitution, the KDM6A antibody can be stored for up to one month at 4oC. For long-term, aliquot and store at -20oC. Avoid repeated freezing and thawing.