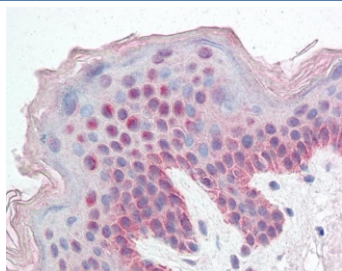


## KDM2B Antibody (R34058)

Catalog No.	Formulation	Size
R34058-100UG	0.5 mg/ml in 1X TBS, pH7.3, with 0.5% BSA (US sourced) and 0.02% sodium azide	100 ug

[Bulk quote request](#)

Availability	1-3 business days
Species Reactivity	Human
Predicted Reactivity	Mouse, Rat, Dog
Format	Antigen affinity purified
Host	Goat
Clonality	Polyclonal (goat origin)
Isotype	Goat Ig
Purity	Antigen affinity
UniProt	Q8NHM5
Localization	Nuclear
Applications	Western Blot : 1-3ug/ml (2) IHC (FFPE) : 5ug/ml ELISA (peptide) LOD : 1:32000
Limitations	This KDM2B antibody is available for research use only.



IHC testing of FFPE human skin tissue with KDM2B antibody at 5ug/ml. HIER: steamed antigen retrieval with pH6 citrate buffer; AP-staining.

## Description

Additional name(s) for this target protein: Lysine (K)-specific demethylase 2B, FBXL10, PCCX2

## Application Notes

Optimal dilution of the KDM2B antibody should be determined by the researcher.

1. This KDM2B antibody is specific for isoform a of the protein.
2. Reported to show bands at 170 + 90 kDa in HeLa lysate.

## Immunogen

Amino acids FGQVEEKLLQKLS were used as the immunogen for this KDM2B antibody (1).

## Storage

Aliquot and store the KDM2B antibody at -20oC.