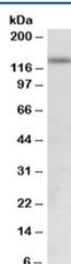


## KDM2A Antibody / FBXL11 (R35136)

Catalog No.	Formulation	Size
R35136-100UG	0.5 mg/ml in 1X TBS, pH7.3, with 0.5% BSA (US sourced) and 0.02% sodium azide	100 ug

[Bulk quote request](#)

Availability	1-3 business days
Species Reactivity	Human
Predicted Reactivity	Mouse, Rat, Dog, Pig, Cow
Format	Antigen affinity purified
Clonality	Polyclonal (goat origin)
Isotype	Goat Ig
Purity	Antigen affinity
Gene ID	22992
Applications	Western Blot : 0.5-2ug/ml ELISA (peptide) LOD : 1:32000
Limitations	This KDM2A antibody is available for research use only.



Western blot testing of human uterus lysate with KDM2A antibody at 0.5ug/ml. Predicted molecular weight: ~133kDa.

## Description

Additional name(s) for this target protein: Lysine (K)-specific demethylase 2A

## Application Notes

Optimal dilution of the KDM2A antibody should be determined by the researcher.

## Immunogen

Amino acids PRKDRQVHLTHFELE were used as the immunogen for this KDM2A antibody.

## **Storage**

Aliquot and store the KDM2A antibody at -20oC.