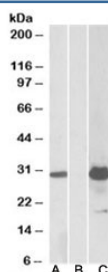


KCTD11 Antibody (R35005)

Catalog No.	Formulation	Size
R35005-100UG	0.5 mg/ml in 1X TBS, pH7.3, with 0.5% BSA (US sourced) and 0.02% sodium azide	100 ug

[Bulk quote request](#)

Availability	1-3 business days
Species Reactivity	Human
Predicted Reactivity	Cow, Dog, Mouse, Rat
Format	Antigen affinity purified
Host	Goat
Clonality	Polyclonal (goat origin)
Isotype	Goat Ig
Purity	Antigen affinity
Gene ID	147040
Applications	Western Blot : 1-3ug/ml ELISA (peptide) LOD : 1:16000
Limitations	This KCTD11 antibody is available for research use only.



Western blot testing of HEK293 lysate overexpressing human KCTD11-FLAG with KCTD11 antibody (1ug/ml) in lane A and anti-FLAG (1/5000) in lane C. Mock-transfected HEK293 probed with KCTD11 Ab (1ug/ml) in lane B. Predicted molecular weight: ~26/30kDa (isoforms 1/2).

Description

Additional name(s) for this target protein: Potassium channel tetramerisation domain containing 11

Application Notes

Optimal dilution of the KCTD11 antibody should be determined by the researcher.

Immunogen

Amino acids PEVEYGRGLQP were used as the immunogen for this KCTD11 antibody. This sequence is common to isoforms 1 (sKCTD11) and 2 (lKCTD11).

Storage

Aliquot and store the KCTD11 antibody at -20oC.