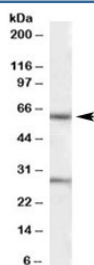


KCNQ1 Antibody (R33938)

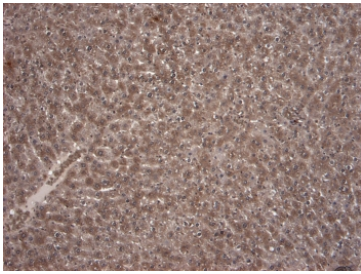
Catalog No.	Formulation	Size
R33938-100UG	0.5 mg/ml in 1X TBS, pH7.3, with 0.5% BSA (US sourced) and 0.02% sodium azide	100 ug

[Bulk quote request](#)

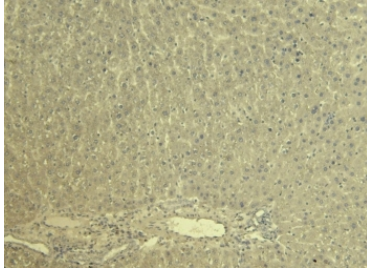
Availability	1-3 business days
Species Reactivity	Human, Rat
Predicted Reactivity	Cow, Dog, Mouse
Format	Antigen affinity purified
Host	Goat
Clonality	Polyclonal (goat origin)
Isotype	Goat Ig
Purity	Antigen affinity
Gene ID	3784
Applications	Western Blot : 1-3ug/ml Immunohistochemistry (FFPE) : 8-10ug/ml ELISA (peptide) LOD : 1:16000
Limitations	This KCNQ1 antibody is available for research use only.



Western blot testing of human heart lysate with KCNQ1 antibody at 1ug/ml. Predicted molecular weight ~75/61 kDa (isoforms). Both observed bands are blocked by addition of the immunizing peptide.



IHC staining of FFPE rat liver tissue with KCNQ1 antibody at 8ug/ml. Required HIER: steamed antigen retrieval with pH6 citrate buffer.



Negative control: IHC staining of FFPE rat liver tissue without KCNQ1 antibody. Required HIER: steamed antigen retrieval with pH6 citrate buffer.

Description

Additional name(s) for this target protein: Potassium voltage-gated channel, KQT-like subfamily, member 1

Application Notes

Optimal dilution of the KCNQ1 antibody should be determined by the researcher.

Immunogen

Amino acids EQLTVPRRGPDDEGS were used as the immunogen for this KCNQ1 antibody.

Storage

Aliquot and store the KCNQ1 antibody at -20oC.