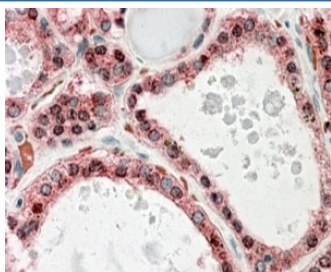


KCNN2 Antibody (R34007)

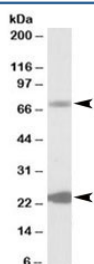
Catalog No.	Formulation	Size
R34007-100UG	0.5 mg/ml in 1X TBS, pH7.3, with 0.5% BSA (US sourced) and 0.02% sodium azide	100 ug

[Bulk quote request](#)

Availability	1-3 business days
Species Reactivity	Human
Predicted Reactivity	Cow, Dog, Mouse, Rat
Format	Antigen affinity purified
Clonality	Polyclonal (goat origin)
Isotype	Goat Ig
Purity	Antigen affinity
Gene ID	3781
Applications	Western Blot : 0.3-1ug/ml Immunohistochemistry (FFPE) : 1-2ug/ml ELISA (peptide) LOD : 1:64000
Limitations	This KCNN2 antibody is available for research use only.



IHC staining of FFPE human thyroid gland with KCNN2 antibody at 4ug/ml. HIER: steamed with pH6 citrate buffer, AP-staining.



Western blot testing of human liver lysate with KCNN2 antibody at 0.3ug/ml. Predicted molecular weight: ~64/26kDa (isoforms 1/2).

Description

Additional name(s) for this target protein: Potassium intermediate/small conductance calcium-activated channel, subfamily N, member 2 antibody, KCa2.2

Application Notes

Optimal dilution of the KCNN2 antibody should be determined by the researcher.

Immunogen

Amino acids ESYDKHVTYNAER were used as the immunogen for this KCNN2 antibody.

Storage

Aliquot and store the KCNN2 antibody at -20oC.