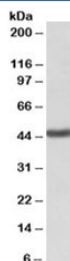


KCNJ1 Antibody (R33595)

Catalog No.	Formulation	Size
R33595-100UG	0.5 mg/ml in 1X TBS, pH7.3, with 0.5% BSA (US sourced) and 0.02% sodium azide	100 ug

[Bulk quote request](#)

Availability	1-3 business days
Species Reactivity	Human
Predicted Reactivity	Mouse, Rat
Format	Antigen affinity purified
Host	Goat
Clonality	Polyclonal (goat origin)
Isotype	Goat Ig
Purity	Antigen affinity
Gene ID	3758
Applications	Western Blot : 1-3ug/ml ELISA (peptide) LOD : 1:8000
Limitations	This KCNJ1 antibody is available for research use only.



Western blot testing of human kidney lysate with KCNJ1 antibody at 1ug/ml. Predicted molecular weight: ~45 kDa.

Description

Additional name(s) for this target protein: Potassium inwardly-rectifying channel, subfamily J, member 1

Application Notes

Optimal dilution of the KCNJ1 antibody should be determined by the researcher.

Immunogen

Amino acids DQININFVVDAGNEN were used as the immunogen for this KCNJ1 antibody.

Storage

Aliquot and store the KCNJ1 antibody at -20oC.