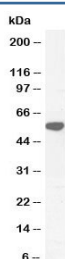


## KATNAL2 Antibody (R36482)

Catalog No.	Formulation	Size
R36482-100UG	0.5 mg/ml in 1X TBS, pH7.3, with 0.5% BSA (US sourced) and 0.02% sodium azide	100 ug

[Bulk quote request](#)

Availability	1-3 business days
Species Reactivity	Human
Format	Antigen affinity purified
Host	Goat
Clonality	Polyclonal (goat origin)
Isotype	Goat Ig
Purity	Antigen affinity
UniProt	Q8IYT4
Applications	Western Blot : 0.3-1ug/ml ELISA (peptide) LOD : 1:128000
Limitations	This KATNAL2 antibody is available for research use only.



Western blot testing of human testis lysate with KATNAL2 antibody at 0.3ug/ml.  
Predicted molecular weight ~53 kDa.

## Description

Katanin p60 ATPase-containing subunit A-like 2, or KATNAL2, severs microtubules in vitro in an ATP-dependent manner. This activity may promote rapid reorganization of cellular microtubule arrays. [UniProt]

## Application Notes

Optimal dilution of the KATNAL2 antibody should be determined by the researcher.

## Immunogen

Amino acids TGDTKSLNKEHPNQE were used as the immunogen for this KATNAL2 antibody.

## Storage

Aliquot and store the KATNAL2 antibody at -20oC.