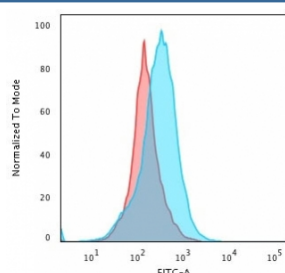


Kappa Light Chain Antibody [clone KLC264] (V2146CF488)

Catalog No.	Formulation	Size
V2146CF488-100T	500 ul at 0.1 mg/ml with 0.1 mg/ml BSA (US sourced), 0.05% sodium azide	100 Tests

[Bulk quote request](#)

Availability	1-3 business days
Species Reactivity	Human
Format	CF488 Conjugate
Host	Mouse
Clonality	Monoclonal (mouse origin)
Isotype	Mouse IgG1, kappa
Clone Name	KLC264
Purity	Protein G affinity chromatography
Applications	Flow Cytometry : 5ul per test per one 10 ⁶ cells in 0.1ml or 5ul per 100ul of whole blood
Limitations	This Kappa Light Chain antibody is available for research use only.



Flow cytometry testing of PFA-fixed human Raji cells with unlabeled Kappa antibody (clone KLC264); Red=isotype control, Blue= Kappa antibody.

Description

This antibody is specific to the kappa light chain of immunoglobulin and shows no cross-reaction with lambda light chain or any of the five heavy chains. In mammals, the two light chains in an antibody are always identical, with only one type of light chain, kappa or lambda. In general, the ratio of Kappa to Lambda is 3:1. However, with the occurrence of multiple myeloma or other B-cell malignancies this ratio is disturbed. Antibody to the kappa light chain is reportedly useful in the identification of leukemias, plasmacytomas, and certain non-Hodgkin's lymphomas. Demonstration of clonality in lymphoid infiltrates indicates that the infiltrate is malignant.

Application Notes

Optimal dilution of the Kappa Light Chain antibody should be determined by the researcher.

Immunogen

Recombinant human Kappa light chain was used as the immunogen for this Kappa antibody.

Storage

Store the Kappa Light Chain antibody at 2-8°C, protected from light.