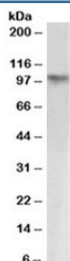


KAP1 Antibody (R34590)

Catalog No.	Formulation	Size
R34590-100UG	0.5 mg/ml in 1X TBS, pH7.3, with 0.5% BSA (US sourced) and 0.02% sodium azide	100 ug

[Bulk quote request](#)

Availability	1-3 business days
Species Reactivity	Human
Predicted Reactivity	Dog, Mouse, Rat
Format	Antigen affinity purified
Clonality	Polyclonal (goat origin)
Isotype	Goat Ig
Purity	Antigen affinity
Gene ID	10155
Localization	Nuclear
Applications	Western Blot : 1-3ug/ml ELISA (peptide) LOD : 1:2000
Limitations	This KAP1 antibody is available for research use only.



Western blot testing HeLa nuclear lysate with KAP1 antibody at 1ug/ml. Observed molecular weight: 88~110kDa depending on sumoylation level.

Description

Additional name(s) for this target protein: KRAB-associated protein 1, Tripartite motif-containing 28; TRIM28; TIF1 beta

Application Notes

Optimal dilution of the KAP1 antibody should be determined by the researcher.

Immunogen

Amino acids KQFNKLTEDKADVQ were used as the immunogen for this KAP1 antibody.

Storage

Aliquot and store the KAP1 antibody at -20oC.