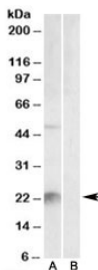


## Kallikrein 6 Antibody (R34403)

Catalog No.	Formulation	Size
R34403-100UG	0.5 mg/ml in 1X TBS, pH7.3, with 0.5% BSA (US sourced) and 0.02% sodium azide	100 ug

[Bulk quote request](#)

<b>Availability</b>	1-3 business days
<b>Species Reactivity</b>	Mouse
<b>Predicted Reactivity</b>	Cow, Rat
<b>Format</b>	Antigen affinity purified
<b>Host</b>	Goat
<b>Clonality</b>	Polyclonal (goat origin)
<b>Isotype</b>	Goat Ig
<b>Purity</b>	Antigen affinity
<b>Gene ID</b>	19144
<b>Applications</b>	Western Blot : 1-3ug/ml ELISA (peptide) LOD : 1:16000
<b>Limitations</b>	This Kallikrein 6 antibody is available for research use only.



Western blot testing of mouse liver lysate with Kallikrein 6 antibody at 2ug/ml with [B] and without [A] blocking/immunizing peptide. Predicted molecular weight: ~27kDa.

### Description

Additional name(s) for this target protein: Kallikrein related-peptidase 6, Klk6, kallikrein 7, Klk7

### Application Notes

Optimal dilution of the Kallikrein 6 antibody should be determined by the researcher.

## **Immunogen**

Amino acids KEKPGVYTDVCTHIR were used as the immunogen for this Kallikrein 6 antibody.

## **Storage**

Aliquot and store the Kallikrein 6 antibody at -20°C.