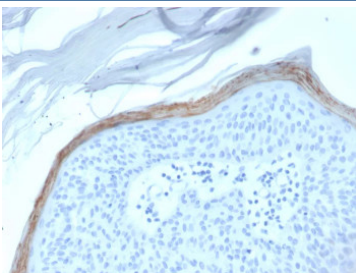


Kallikrein 5 Antibody [clone KLK5/3845] (V8499)

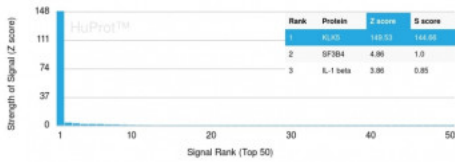
Catalog No.	Formulation	Size
V8499-100UG	0.2 mg/ml in 1X PBS with 0.1 mg/ml BSA (US sourced) and 0.05% sodium azide	100 ug
V8499-20UG	0.2 mg/ml in 1X PBS with 0.1 mg/ml BSA (US sourced) and 0.05% sodium azide	20 ug
V8499SAF-100UG	1 mg/ml in 1X PBS; BSA free, sodium azide free	100 ug

[Bulk quote request](#)

Availability	1-3 business days
Species Reactivity	Human
Format	Purified
Host	Mouse
Clonality	Monoclonal (mouse origin)
Isotype	Mouse IgG2a, kappa
Clone Name	KLK5/3845
Purity	Protein G affinity chromatography
UniProt	Q9Y337
Localization	Secreted
Applications	Immunohistochemistry (FFPE) : 1-2ug/ml for 30 minutes at RT
Limitations	This Kallikrein 5 antibody is available for research use only.



Kallikrein 5 Antibody Epidermis IHC. Immunohistochemistry analysis of FFPE human skin tissue stained with Kallikrein 5 Antibody demonstrates strong linear and cytoplasmic HRP-DAB brown staining within the superficial epidermal keratinocyte layer, consistent with KLK5-associated serine protease expression involved in epidermal barrier regulation and skin desquamation pathways. This kallikrein family protease antibody highlights epithelial differentiation-associated signaling and cutaneous barrier homeostasis within stratified squamous epithelium.



Analysis of HuProt(TM) microarray containing more than 19,000 full-length human proteins using KLK5 antibody (clone KLK5/3845). These results demonstrate the foremost specificity of the KLK5/3845 mAb. Z- and S- score: The Z-score represents the strength of a signal that an antibody (in combination with a fluorescently-tagged anti-IgG secondary Ab) produces when binding to a particular protein on the HuProt(TM) array. Z-scores are described in units of standard deviations (SD's) above the mean value of all signals generated on that array. If the targets on the HuProt(TM) are arranged in descending order of the Z-score, the S-score is the difference (also in units of SD's) between the Z-scores. The S-score therefore represents the relative target specificity of an Ab to its intended target.

Description

Kallikreins (KLKs) belong to the serine protease family of proteolytic enzymes. Human pancreatic/renal KLK encodes for the KLK1 enzyme, which is involved in post-translational processing of polypeptide precursors. The function of the other members of KLK gene family is still currently unknown, but evidence suggests that many KLKs are implicated in carcinogenesis. The human KLK gene family consists of 15 serine proteases. The human KLK genes are clustered on chromosome 19q13. Unlike other kallikreins, the KLK4-15 encoded proteases are less related and do not contain a conventional KLK loop. Clusters of genes exhibit high prostatic (KLK2-4, KLK15) or pancreatic (KLK6-13) expression. KLK2 is also known as glandular kallikrein 2, tissue kallikrein, or HGK-1 and KLK3 is known as prostate-specific antigen (PSA). Both KLK2 and KLK3 have important applications in prostate cancer and breast cancer diagnostics. Many of the KLKs are regulated by steroid hormones and a few of them, specifically KLK3, KLK6 and KLK10, are known to be downregulated in breast and other cancers. KLK5 expression is abundant in skin, mammary gland and testis.

For highly specific detection of KLK5-associated epithelial barrier signaling pathways, see our [Kallikrein 5 Antibody / Epidermal Barrier Protease Antibody](#) page featuring clone KLK5/3841 with IHC and HuProt(TM) microarray specificity validation data.

Application Notes

Optimal dilution of the Kallikrein 5 antibody should be determined by the researcher.

Immunogen

A portion of amino acids 36-177 from the human protein was used as the immunogen for the Kallikrein 5 antibody.

Storage

Store the Kallikrein 5 antibody at 2-8oC (with azide) or aliquot and store at -20oC or colder (without azide).