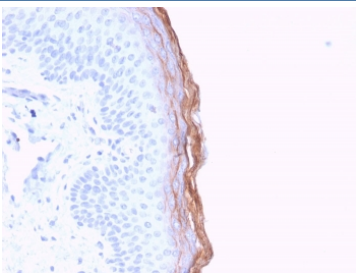


## Kallikrein 5 Antibody [clone KLK5/3841] (V8212)

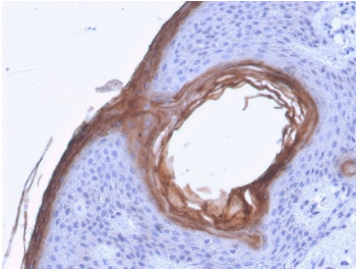
Catalog No.	Formulation	Size
V8212-100UG	0.2 mg/ml in 1X PBS with 0.1 mg/ml BSA (US sourced) and 0.05% sodium azide	100 ug
V8212-20UG	0.2 mg/ml in 1X PBS with 0.1 mg/ml BSA (US sourced) and 0.05% sodium azide	20 ug
V8212SAF-100UG	1 mg/ml in 1X PBS; BSA free, sodium azide free	100 ug

### Bulk quote request

<b>Availability</b>	1-3 business days
<b>Species Reactivity</b>	Human
<b>Format</b>	Purified
<b>Host</b>	Mouse
<b>Clonality</b>	Monoclonal (mouse origin)
<b>Isotype</b>	Mouse IgG2c, kappa
<b>Clone Name</b>	KLK5/3841
<b>Purity</b>	Protein G affinity chromatography
<b>UniProt</b>	Q9Y337
<b>Localization</b>	Secreted
<b>Applications</b>	Immunohistochemistry (FFPE) : 1-2ug/ml for 30 minutes at RT
<b>Limitations</b>	This Kallikrein 5 antibody is available for research use only.



IHC staining of FFPE human skin with Kallikrein 5 antibody (clone KLK5/3841). HIER: boil tissue sections in pH6, 10mM citrate buffer, for 20 min and allow to cool before testing.

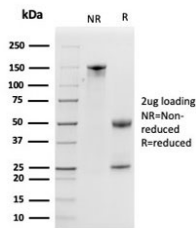


IHC staining of FFPE human skin with Kallikrein 5 antibody (clone KLK5/3841). HIER: boil tissue sections in pH6, 10mM citrate buffer, for 20 min and allow to cool before testing.

#### Human Protein Microarray Specificity Validation



Analysis of HuProt(TM) microarray containing more than 19,000 full-length human proteins using Kallikrein 5 antibody (clone KLK5/3841). These results demonstrate the foremost specificity of the KLK5/3841 mAb. Z- and S- score: The Z-score represents the strength of a signal that an antibody (in combination with a fluorescently-tagged anti-IgG secondary Ab) produces when binding to a particular protein on the HuProt(TM) array. Z-scores are described in units of standard deviations (SD's) above the mean value of all signals generated on that array. If the targets on the HuProt(TM) are arranged in descending order of the Z-score, the S-score is the difference (also in units of SD's) between the Z-scores. The S-score therefore represents the relative target specificity of an Ab to its intended target.



SDS-PAGE analysis of purified, BSA-free Kallikrein 5 antibody (clone KLK5/3841) as confirmation of integrity and purity.

## Description

Kallikreins (KLKs) belong to the serine protease family of proteolytic enzymes. Human pancreatic/renal KLK encodes for the KLK1 enzyme, which is involved in post-translational processing of polypeptide precursors. The function of the other members of KLK gene family is still currently unknown, but evidence suggests that many KLKs are implicated in carcinogenesis. The human KLK gene family consists of 15 serine proteases. The human KLK genes are clustered on chromosome 19q13. Unlike other kallikreins, the KLK4-15 encoded proteases are less related and do not contain a conventional KLK loop. Clusters of genes exhibit high prostatic (KLK2-4, KLK15) or pancreatic (KLK6-13) expression. KLK2 is also known as glandular kallikrein 2, tissue kallikrein, or HGK-1 and KLK3 is known as prostate-specific antigen (PSA). Both KLK2 and KLK3 have important applications in prostate cancer and breast cancer diagnostics. Many of the KLKs are regulated by steroid hormones and a few of them, specifically KLK3, KLK6 and KLK10, are known to be downregulated in breast and other cancers. KLK5 expression is abundant in skin, mammary gland and testis.

## Application Notes

Optimal dilution of the Kallikrein 5 antibody should be determined by the researcher.

## Immunogen

A portion of amino acids 36-177 from the human protein was used as the immunogen for the Kallikrein 5 antibody.

## Storage

Store the Kallikrein 5 antibody at 2-8oC (with azide) or aliquot and store at -20oC or colder (without azide).

