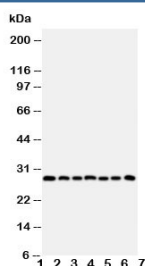


Kallikrein-11 Antibody (R30714)

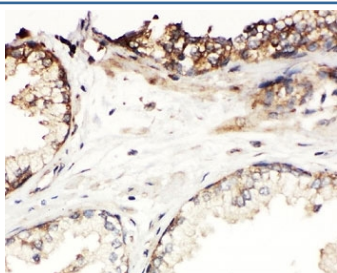
Catalog No.	Formulation	Size
R30714	0.5mg/ml if reconstituted with 0.2ml sterile DI water	100 ug

Bulk quote request

Availability	1-3 business days
Species Reactivity	Human
Format	Antigen affinity purified
Clonality	Polyclonal (rabbit origin)
Isotype	Rabbit IgG
Purity	Antigen affinity
Buffer	Lyophilized from 1X PBS with 2.5% BSA and 0.025% sodium azide/thimerosal
UniProt	Q9UBX7
Applications	Western Blot : 0.5-1ug/ml IHC (FFPE) : 0.5-1ug/ml
Limitations	This Kallikrein-11 antibody is available for research use only.



Western blot testing of Kallikrein-11 antibody and Lane 1: U87; 2: A549; 3: HeLa; 4: MM231; 5: MM453; 6: COLO320; 7: Jurkat cell lysate. Predicted size: ~27KD



IHC-P: Kallikrein-11 antibody testing of human prostatic cancer tissue

Description

Kallikrein-11, also called PRSS20 or TLSP, is a protein that in humans is encoded by the KLK11 gene. It is a member of the kallikrein subfamily of serine proteases, which are involved in a variety of enzymatic processes. The gene contains 6 exons, the first of which is noncoding. KLK11 shares 48% amino acid sequence identity with mouse neuropsin, 43% identity with both human trypsin-1 and human kallikrein, and 38% identity with the mouse nerve growth factor gamma subunit. Alternate splicing of the KLK11 gene results in two transcript variants encoding two different isoforms which are differentially expressed. Western blot analysis of recombinant KLK11 suggested that the protein is secreted and posttranslationally processed.

Application Notes

The stated application concentrations are suggested starting amounts. Titration of the Kallikrein-11 antibody may be required due to differences in protocols and secondary/substrate sensitivity.

Immunogen

An amino acid sequence from the C-terminus of human Kallikrein-11 (YTKVCKYVDWIQETMKNN) was used as the immunogen for this Kallikrein-11 antibody.

Storage

After reconstitution, the Kallikrein-11 antibody can be stored for up to one month at 4oC. For long-term, aliquot and store at -20oC. Avoid repeated freezing and thawing.