

## Kalirin Antibody (isoform 2) (R35810)

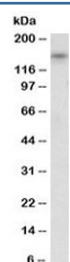
Catalog No.	Formulation	Size
R35810-100UG	0.5 mg/ml in 1X TBS, pH7.3, with 0.5% BSA (US sourced) and 0.02% sodium azide	100 ug

[Bulk quote request](#)

Availability	1-3 business days
Species Reactivity	Human, Mouse, Rat
Format	Antigen affinity purified
Clonality	Polyclonal (goat origin)
Isotype	Goat Ig
Purity	Antigen affinity
Gene ID	8997
Applications	Western Blot : 1-2ug/ml ELISA (peptide) LOD : 1:16000
Limitations	This Kalirin antibody is available for research use only.



Western blot testing of rat brain lysate with Kalirin antibody at 0.1ug/ml. Predicted molecular weight: ~192 kDa (isoform 2).



Western blot testing of mouse brain lysate with Kalirin antibody at 1ug/ml. Predicted molecular weight: ~192 kDa (isoform 2), observed here at ~150 kDa.

## Description

Additional name(s) for this target protein: KALRN, RhoGEF kinase; KALRN

## Application Notes

Optimal dilution of the Kalirin antibody should be determined by the researcher.

1. This Kalirin antibody is specific to isoform 2.

## Immunogen

Amino acids RWHLGPGDPFSTYV were used as the immunogen for this Kalirin antibody.

## Storage

Aliquot and store the Kalirin antibody at -20oC.