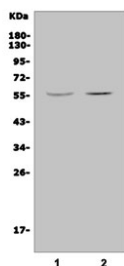


## JRK Antibody / Jerky protein homolog (RQ6102)

Catalog No.	Formulation	Size
RQ6102	0.5mg/ml if reconstituted with 0.2ml sterile DI water	100 ug

[Bulk quote request](#)

<b>Availability</b>	1-3 business days
<b>Species Reactivity</b>	Human
<b>Format</b>	Antigen affinity purified
<b>Host</b>	Rabbit
<b>Clonality</b>	Polyclonal (rabbit origin)
<b>Isotype</b>	Rabbit IgG
<b>Purity</b>	Affinity purified
<b>Buffer</b>	Lyophilized from 1X PBS with 2% Trehalose and 0.025% sodium azide
<b>UniProt</b>	O75564
<b>Applications</b>	Western Blot : 1-2ug/ml Direct ELISA : 0.1-0.5ug/ml
<b>Limitations</b>	This JRK antibody is available for research use only.



Western blot testing of human 1) HEK293 and 2) K562 cell lysate with JRK antibody. Predicted molecular weight ~65 kDa.

### Description

This gene encodes a conserved protein that is similar to DNA-binding proteins, such as major centromere autoantigen B (CENPB). Inactivation of the related gene in mice resulted in epileptic seizures. Childhood Absence Epilepsy (CAE) has been mapped to the same chromosomal location (8q24.3) as this gene. Alternative splicing results in multiple transcript variants.

## Application Notes

Optimal dilution of the JRK antibody should be determined by the researcher.

## Immunogen

A human recombinant partial protein (amino acids M1-Q257) was used as the immunogen for the JRK antibody.

## Storage

After reconstitution, the JRK antibody can be stored for up to one month at 4°C. For long-term, aliquot and store at -20°C. Avoid repeated freezing and thawing.