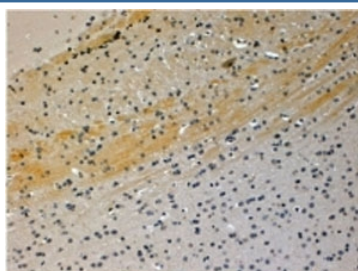


JIP3 Antibody (R34748)

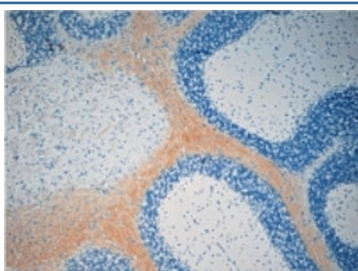
Catalog No.	Formulation	Size
R34748-100UG	0.5 mg/ml in 1X TBS, pH7.3, with 0.5% BSA (US sourced) and 0.02% sodium azide	100 ug

[Bulk quote request](#)

Availability	1-3 business days
Species Reactivity	Human, Mouse
Predicted Reactivity	Cow, Rat
Format	Antigen affinity purified
Clonality	Polyclonal (goat origin)
Isotype	Goat Ig
Purity	Antigen affinity
Gene ID	23162
Applications	Immunohistochemistry (FFPE) : 4-6ug/ml ELISA (peptide) LOD : 1:4000
Limitations	This JIP3 antibody is available for research use only.



IHC testing of FFPE mouse brain with JIP3 antibody at 4ug/ml. HIER: steamed with pH6 citrate buffer, HRP-staining.



IHC testing of FFPE mouse brain with JIP3 antibody at 4ug/ml. HIER: steamed with pH6 citrate buffer, HRP-staining.

Description

Additional name(s) for this target protein: JNK-interacting protein 3, mitogen-activated protein kinase 8 interacting protein 3; MAPK8IP3

Application Notes

Optimal dilution of the JIP3 antibody should be determined by the researcher.

Immunogen

Amino acids MEIQMDEGGGVV were used as the immunogen for this JIP3 antibody.

Storage

Aliquot and store the JIP3 antibody at -20oC.