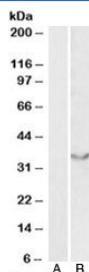


JAM2 Antibody (R35431)

Catalog No.	Formulation	Size
R35431-100UG	0.5 mg/ml in 1X TBS, pH7.3, with 0.5% BSA (US sourced) and 0.02% sodium azide	100 ug

[Bulk quote request](#)

Availability	1-3 business days
Species Reactivity	Human
Predicted Reactivity	Cow, Dog, Mouse, Rat
Format	Antigen affinity purified
Host	Goat
Clonality	Polyclonal (goat origin)
Isotype	Goat Ig
Purity	Antigen affinity
Gene ID	58494
Applications	Western Blot : 0.5-1ug/ml ELISA (peptide) LOD : 1:4000
Limitations	This JAM2 antibody is available for research use only.



Western blot testing of human heart lysate with JAM2 antibody at 0.5ug/ml with [B] and without [A] blocking/immunizing peptide. Predicted molecular weight: ~33kDa.

Description

Additional name(s) for this target protein: Junctional adhesion molecule 2, JAMB, CD322

Application Notes

Optimal dilution of the JAM2 antibody should be determined by the researcher.

Immunogen

Amino acids QRKGYFSKETSFQ were used as the immunogen for this JAM2 antibody.

Storage

Aliquot and store the JAM2 antibody at -20°C.