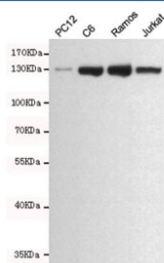


## JAK1 Antibody [clone 7B1-B6-G7] (F54015)

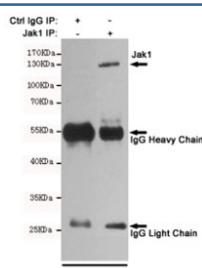
Catalog No.	Formulation	Size
F54015-0.1ML	In PBS with 50% glycerol and 0.03% ProClin 300	0.1 ml

**Bulk quote request**

<b>Availability</b>	5-10 business days
<b>Species Reactivity</b>	Human, Rat
<b>Format</b>	Purified
<b>Host</b>	Mouse
<b>Clonality</b>	Monoclonal (mouse origin)
<b>Isotype</b>	Mouse IgG1
<b>Clone Name</b>	7B1-B6-G7
<b>Purity</b>	Protein G affinity
<b>UniProt</b>	P23458
<b>Applications</b>	Western Blot : 1:500 Immunoprecipitation : suitable
<b>Limitations</b>	This JAK1 antibody is available for research use only.



Western blot testing of rat PC12, rat C6, human Ramos and human Jurkat cell lysates using JAK1 antibody at 1:500. Predicted molecular weight ~133 kDa.



Immunoprecipitation and western blot of HeLa cell lysate using the JAK1 antibody.

## Description

Janus kinase 1 is a tyrosine kinase of the non-receptor type, involved in the IFN-alpha/beta/gamma signal pathway. Kinase partner for the interleukin (IL)-2 receptor.

## Application Notes

The stated application concentrations are suggested starting points. Titration of the JAK1 antibody may be required due to differences in protocols and secondary/substrate sensitivity.

## Immunogen

A human recombinant partial protein was used as the immunogen for this JAK1 antibody.

## Storage

Store the Jak1 antibody at -20oC.