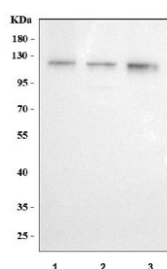


JADE2 Antibody / PHF15 (RQ8622)

Catalog No.	Formulation	Size
RQ8622	0.5mg/ml if reconstituted with 0.2ml sterile DI water	100 ug

Bulk quote request

Availability	1-3 days
Species Reactivity	Human
Format	Antigen affinity purified
Clonality	Polyclonal (rabbit origin)
Isotype	Rabbit IgG
Purity	Antigen affinity purified
Buffer	Lyophilized from 1X PBS with 2% Trehalose
UniProt	Q9NQC1
Applications	Western Blot : 0.5-1ug/ml ELISA : 0.1-0.5ug/ml
Limitations	This JADE2 antibody is available for research use only.



Western blot testing of human 1) A431, 2) A549 and 3) SiHa cell lysate with JADE2 antibody. Predicted molecular weight ~87 kDa.

Description

PHF15, also known as Protein Jade-2, has 3 isoforms, a 790 amino acid isoform that is 87 kDa, a 789 amino acid isoform that is 87 kDa and a 562 amino acid isoform that is 63 kDa, has a histone H4-specific acetyltransferase activity as a component of the HBO1 complex, a reduced activity toward histone H3 and is responsible for the bulk of histone H4 acetylation in vivo. This protein has been shown an interaction with ING4, KAT7, ING5, PACSIN, ZBTB3, ZBTB5, ZNF496, and VHL proteins in histone H3 acetylation, histone H4-K5 acetylation, histone H4-K8 acetylation, and histone H4-K12 acetylation biological processes.

Application Notes

Optimal dilution of the JADE2 antibody should be determined by the researcher.

Immunogen

An E.coli-derived human recombinant protein (amino acids L397-D746) was used as the immunogen for the JADE2 antibody.

Storage

After reconstitution, the JADE2 antibody can be stored for up to one month at 4oC. For long-term, aliquot and store at -20oC. Avoid repeated freezing and thawing.