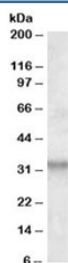


ITM2B Antibody (R34168)

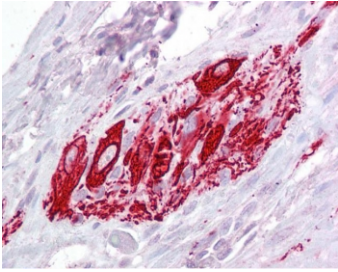
Catalog No.	Formulation	Size
R34168-100UG	0.5 mg/ml in 1X TBS, pH7.3, with 0.5% BSA (US sourced) and 0.02% sodium azide	100 ug

[Bulk quote request](#)

Availability	1-3 business days
Species Reactivity	Human
Predicted Reactivity	Mouse, Rat, Cow
Format	Antigen affinity purified
Host	Goat
Clonality	Polyclonal (goat origin)
Isotype	Goat Ig
Purity	Antigen affinity
Gene ID	9445
Applications	Western Blot : 1-3ug/ml IHC (FFPE) : 2.5ug/ml ELISA (peptide) LOD : 1:8000
Limitations	This ITM2B antibody is available for research use only.



Western blot testing of human hippocampus lysate with ITM2B antibody at 1ug/ml.
Predicted molecular weight: ~30 kDa.



IHC testing of FFPE human small intestine tissue with ITM2B antibody at 2.5ug/ml.
Required HIER: steamed antigen retrieval with pH6 citrate buffer; AP-staining.

Description

Additional name(s) for this target protein: Integral membrane protein 2B

Application Notes

Optimal dilution of the ITM2B antibody should be determined by the researcher.

Immunogen

Amino acids HDKETYKLQRRETIK were used as the immunogen for this ITM2B antibody.

Storage

Aliquot and store the ITM2B antibody at -20oC.