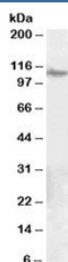


## ITGB5 Antibody (R36173)

Catalog No.	Formulation	Size
R36173-100UG	0.5 mg/ml in 1X TBS, pH7.3, with 0.5% BSA (US sourced) and 0.02% sodium azide	100 ug

[Bulk quote request](#)

Availability	1-3 business days
Species Reactivity	Human, Mouse
Predicted Reactivity	Cow, Dog, Pig, Rat
Format	Antigen affinity purified
Clonality	Polyclonal (goat origin)
Isotype	Goat Ig
Purity	Antigen affinity
Gene ID	3693
Applications	Western Blot : 0.1-0.3ug/ml ELISA (peptide) LOD : 1:16000
Limitations	This ITGB5 antibody is available for research use only.



Western blot testing of human ovary lysate with ITGB5 antibody at 0.1ug/ml. Predicted molecular weight: ~88kDa, observed here at ~110kDa. (1)

## Description

Additional name(s) for this target protein: Integrin beta 5

## Application Notes

Optimal dilution of the ITGB5 antibody should be determined by the researcher.

1. The ~110kDa band is also seen in wild type mouse eye lysate but not in the knock out lysate.

## Immunogen

Amino acids TFNKFNKSNGTVTD were used as the immunogen for this ITGB5 antibody.

## Storage

Aliquot and store the ITGB5 antibody at -20oC.