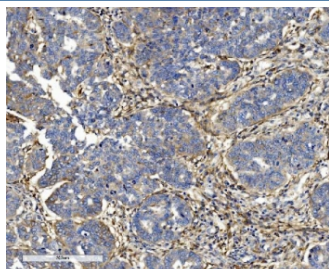


ITGB5 Antibody / Integrin beta 5 [clone 9E2.] (RQ6365)

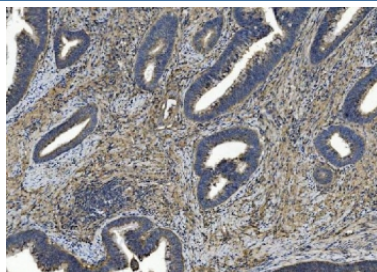
Catalog No.	Formulation	Size
RQ6365	0.5mg/ml if reconstituted with 0.2ml sterile DI water	100 ug

Bulk quote request

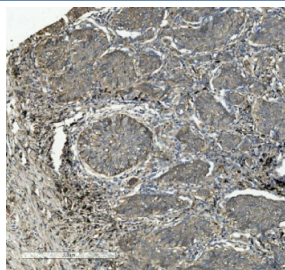
Availability	1-3 business days
Species Reactivity	Human
Format	Purified
Host	Mouse
Clonality	Monoclonal (mouse origin)
Isotype	Mouse IgG1
Clone Name	9E2.
Purity	Antigen affinity purified
Buffer	Lyophilized from 1X PBS with 2% Trehalose
UniProt	P18084
Applications	Western Blot : 0.5-1ug/ml Immunohistochemistry (FFPE) : 2-5ug/ml Flow Cytometry : 1-3ug/million cells
Limitations	This ITGB5 antibody is available for research use only.



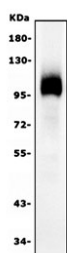
IHC staining of FFPE human ovarian serous adenocarcinoma tissue with ITGB5 antibody. HIER: boil tissue sections in pH8 EDTA for 20 min and allow to cool before testing.



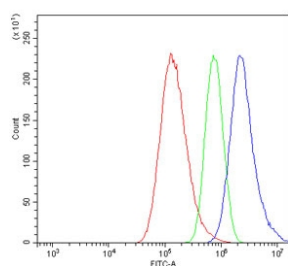
IHC staining of FFPE human rectal cancer tissue with ITGB5 antibody. HIER: boil tissue sections in pH8 EDTA for 20 min and allow to cool before testing.



IHC staining of FFPE human lung cancer tissue with ITGB5 antibody. HIER: boil tissue sections in pH8 EDTA for 20 min and allow to cool before testing.



Western blot testing of human A549 cell lysate with ITGB5 antibody. Predicted molecular weight ~88 kDa.



Flow cytometry testing of human A549 cells with ITGB5 antibody at 1 ug/million cells (blocked with goat sera); Red=cells alone, Green=isotype control, Blue= ITGB5 antibody.

Description

This gene encodes a beta subunit of integrin, which can combine with different alpha chains to form a variety of integrin heterodimers. Integrins are integral cell-surface receptors that participate in cell adhesion as well as cell-surface mediated signaling. The alphav beta5 integrin is involved in adhesion to vitronectin.

Application Notes

Optimal dilution of the ITGB5 antibody should be determined by the researcher.

Immunogen

Recombinant human protein (amino acids S32-D689) was used as the immunogen for the ITGB5 antibody.

Storage

After reconstitution, the ITGB5 antibody can be stored for up to one month at 4oC. For long-term, aliquot and store at -20oC. Avoid repeated freezing and thawing.

