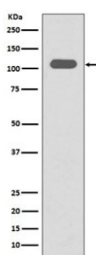


ITGB3 Antibody / Integrin beta 3 / CD61 [clone BFE-9] (RQ5102)

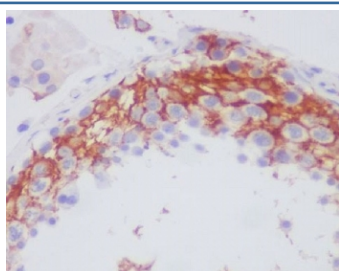
Catalog No.	Formulation	Size
RQ5102	Antibody in PBS with 0.02% sodium azide, 50% glycerol and 0.4-0.5mg/ml BSA	100 ul

[Bulk quote request](#)

Availability	1-2 weeks
Species Reactivity	Human
Format	Purified
Clonality	Rabbit Monoclonal
Isotype	Rabbit IgG
Clone Name	BFE-9
Purity	Affinity purified
UniProt	P05106
Applications	Western Blot : 1:1000-1:2000 Immunohistochemistry (FFPE) : 1:50-1:200
Limitations	This ITGB3 antibody is available for research use only.



Western blot testing of human spleen lysate with ITGB3 antibody. Expected molecular weight: 87-110 kDa depending on glycosylation level.



IHC staining of FFPE human testis tissue with ITGB3 antibody. HIER: boil tissue sections in pH6, 10mM citrate buffer, for 10-20 min and allow to cool before testing.

Description

The ITGB3 protein product is the integrin beta chain beta 3. Integrins are integral cell-surface proteins composed of an alpha chain and a beta chain. A given chain may combine with multiple partners resulting in different integrins. Integrin beta 3 is found along with the alpha IIb chain in platelets. Integrins are known to participate in cell adhesion as well as cell-surface mediated signalling. [RefSeq]

Application Notes

Optimal dilution of the ITGB3 antibody should be determined by the researcher.

Immunogen

A synthetic peptide specific to human Integrin beta 3 was used as the immunogen for the ITGB3 antibody.

Storage

Store the ITGB3 antibody at -20oC.