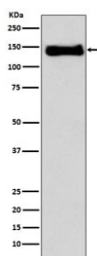


ITGB1 Antibody / Integrin beta 1 / CD29 [clone AFI-9] (RQ5126)

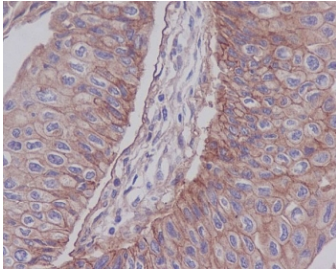
Catalog No.	Formulation	Size
RQ5126	Antibody in PBS with 0.02% sodium azide, 50% glycerol and 0.4-0.5mg/ml BSA	100 ul

[Bulk quote request](#)

Availability	1-2 weeks
Species Reactivity	Human
Format	Purified
Host	Rabbit
Clonality	Rabbit Monoclonal
Isotype	Rabbit IgG
Clone Name	AFI-9
Purity	Affinity purified
UniProt	P05556
Localization	Cell membrane, cytoplasmic
Applications	Western Blot : 1:500-1:2000 Immunohistochemistry (FFPE) : 1:50-1:200
Limitations	This ITGB1 antibody is available for research use only.



Western blot testing of human U937 cell lysate with ITGB1 antibody. Expected molecular weight: 88~150 kDa depending on the level of glycosylation.



IHC staining of FFPE human bladder carcinoma with ITGB1 antibody. HIER: boil tissue sections in pH6, 10mM citrate buffer, for 10-20 min and allow to cool before testing.

Description

Integrins are heterodimeric proteins made up of alpha and beta subunits. At least 18 alpha and 8 beta subunits have been described in mammals. Integrin family members are membrane receptors involved in cell adhesion and recognition in a variety of processes including embryogenesis, hemostasis, tissue repair, immune response and metastatic diffusion of tumor cells. This gene encodes a beta subunit. [RefSeq]

Application Notes

Optimal dilution of the ITGB1 antibody should be determined by the researcher.

Immunogen

A synthetic peptide specific to human Integrin beta 1 / ITGB1 was used as the immunogen for the ITGB1 antibody.

Storage

Store the ITGB1 antibody at -20oC.