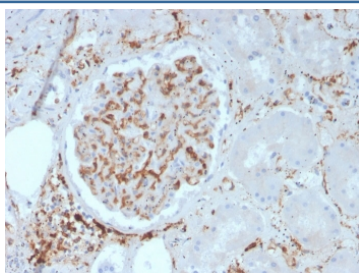


ITGB1 Antibody / CD29 [clone ITGB1/3613] (V8418)

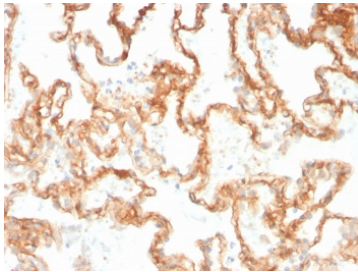
Catalog No.	Formulation	Size
V8418-100UG	0.2 mg/ml in 1X PBS with 0.1 mg/ml BSA (US sourced) and 0.05% sodium azide	100 ug
V8418-20UG	0.2 mg/ml in 1X PBS with 0.1 mg/ml BSA (US sourced) and 0.05% sodium azide	20 ug
V8418SAF-100UG	1 mg/ml in 1X PBS; BSA free, sodium azide free	100 ug

Bulk quote request

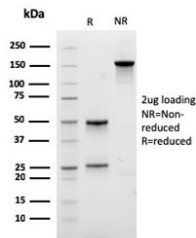
Availability	1-3 business days
Species Reactivity	Human
Format	Purified
Clonality	Monoclonal (mouse origin)
Isotype	Mouse IgG1, kappa
Clone Name	ITGB1/3613
Purity	Protein G affinity chromatography
UniProt	P05556
Localization	Cell membrane, cytoplasm
Applications	ELISA : order Ab without BSA for coating Immunohistochemistry (FFPE) : 1-2ug/ml for 30 minutes at RT
Limitations	This ITGB1 antibody is available for research use only.



IHC staining of FFPE human kidney with ITGB1 antibody. HIER: boil tissue sections in pH 9 10mM Tris with 1mM EDTA for 20 min and allow to cool before testing.



IHC staining of FFPE human lung with ITGB1 antibody. HIER: boil tissue sections in pH 9 10mM Tris with 1mM EDTA for 20 min and allow to cool before testing.



SDS-PAGE analysis of purified, BSA-free ITGB1 antibody as confirmation of integrity and purity.

Description

CD29/Integrin beta 1/ITGB1 is an adhesion receptor and co-stimulatory molecule. This antigen was initially characterized as GPIIa on platelets and as the common b1 subunit of the very late antigen (VLA) protein family. CD29 forms a non-covalent heterodimeric complex with integrin alpha subunits. It also mediates adhesion to invasion and thrombospondin.

Application Notes

Optimal dilution of the ITGB1 antibody should be determined by the researcher.

Immunogen

Purified human beta 1 integrin from HT1080 fibrosarcoma cells was used as the immunogen for the ITGB1 antibody.

Storage

Store the ITGB1 antibody at 2-8oC (with azide) or aliquot and store at -20oC or colder (without azide).