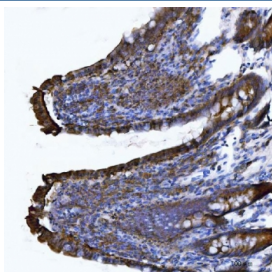


## Itgae Antibody / Cd103 (RQ7083)

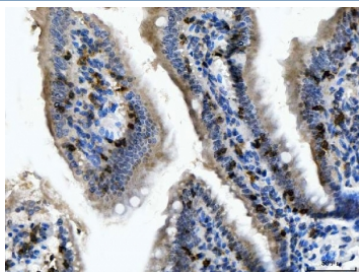
Catalog No.	Formulation	Size
RQ7083	0.5mg/ml if reconstituted with 0.2ml sterile DI water	100 ug

**Bulk quote request**

<b>Availability</b>	1-3 business days
<b>Species Reactivity</b>	Mouse, Rat
<b>Format</b>	Antigen affinity purified
<b>Host</b>	Rabbit
<b>Clonality</b>	Polyclonal (rabbit origin)
<b>Isotype</b>	Rabbit IgG
<b>Purity</b>	Antigen affinity purified
<b>Buffer</b>	Lyophilized from 1X PBS with 2% Trehalose
<b>UniProt</b>	Q60677
<b>Localization</b>	Cell membrane, cytoplasm
<b>Applications</b>	Immunohistochemistry (FFPE) : 2-5ug/ml Direct ELISA : 0.1-0.5ug/ml
<b>Limitations</b>	This Itgae antibody is available for research use only.



IHC staining of FFPE rat colon tissue with Itgae antibody. HIER: boil tissue sections in pH8 EDTA for 20 min and allow to cool before testing.



IHC staining of FFPE mouse colon tissue with Itgae antibody. HIER: boil tissue sections in pH8 EDTA for 20 min and allow to cool before testing.

## Description

ITGAE (INTEGRIN, ALPHA-E), also known as CD103, is an integrin protein that in human is encoded by the ITGAE gene. The ITGAE gene is mapped to chromosome 17p13 by inclusion within a BAC contig. ITGAE is expressed widely on intraepithelial lymphocyte (IEL) T cells (both alpha-beta T cells and gamma-delta T cells) and on some peripheral regulatory T cells (Tregs) which is important for decreasing the immune response and appears to play a crucial role in the prevention of autoimmune diseases. ITGAE shares overall homology with other alpha integrins but has a unique 55-amino acid extra region located just N-terminal to the I domain that contains 18 consecutive charged residues and a proteolytic cleavage site.

## Application Notes

Optimal dilution of the Itgae antibody should be determined by the researcher.

## Immunogen

Recombinant mouse protein (amino acids F20-E1061) was used as the immunogen for the Itgae antibody.

## Storage

After reconstitution, the Itgae antibody can be stored for up to one month at 4°C. For long-term, aliquot and store at -20°C. Avoid repeated freezing and thawing.