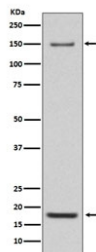


ITGA5 Antibody / Integrin alpha 5 [clone IDB-9] (RQ5245)

Catalog No.	Formulation	Size
RQ5245	Antibody in PBS with 0.02% sodium azide, 50% glycerol and 0.4-0.5mg/ml BSA	100 ul

[Bulk quote request](#)

Availability	1-2 weeks
Species Reactivity	Human, Mouse
Format	Purified
Host	Rabbit
Clonality	Rabbit Monoclonal
Isotype	Rabbit IgG
Clone Name	IDB-9
Purity	Affinity purified
UniProt	P08648
Applications	Western Blot : 1:1000-1:2000
Limitations	This ITGA5 antibody is available for research use only.



Western blot testing of mouse heart lysate with ITGA5 antibody. Expected molecular weight: 115-160 kDa depending on glycosylation level. An ~25 kDa band corresponding to the ITGA5 light chain may also be detected.

Description

The product of this gene belongs to the integrin alpha chain family. Integrins are heterodimeric integral membrane proteins composed of an alpha subunit and a beta subunit that function in cell surface adhesion and signaling. The encoded preproprotein is proteolytically processed to generate light and heavy chains that comprise the alpha 5 subunit. This subunit associates with the beta 1 subunit to form a fibronectin receptor. This integrin may promote tumor invasion, and higher expression of this gene may be correlated with shorter survival time in lung cancer patients. Note that the integrin alpha 5 and integrin alpha V subunits are encoded by distinct genes. [RefSeq]

Application Notes

Optimal dilution of the ITGA5 antibody should be determined by the researcher.

Immunogen

A synthetic peptide specific to human Integrin alpha 5 / ITGA5 was used as the immunogen for the ITGA5 antibody.

Storage

Store the ITGA5 antibody at -20oC.